

LARRY SANG'S

Chinese Astrology
&
Feng Shui Guide



THE YEAR OF
THE SHEEP

2015

with Lorraine Wilcox

LARRY SANG'S

CHINESE ASTROLOGY & FENG SHUI GUIDE

2015

The Year of The Sheep



with Lorraine Wilcox

LARRY SANG'S

The Year of The Sheep ASTROLOGY AND FENG SHUI GUIDE

Original Title:
**Master Larry Sang's 2015 The Year of the Sheep,
Astrology and Feng Shui Guide**

Published by: The American Feng Shui Institute
7220 N. Rosemead Blvd., Suite 204
San Gabriel, CA 91775
Email: fsinfo@amfengshui.com
www.amfengshui.com

© 2014 Larry Sang

Larry Sang's Yearly Chinese Astrology and Feng Shui Guide is a copyrighted publication. All rights reserved under international copyright conventions. No part of this book may be reproduced, transmitted or utilized in any form, or by any means electronic or mechanical, including photocopying, recording or any information storage and retrieval system, without the expressed written permission of the author, except for brief quotations used in a review.

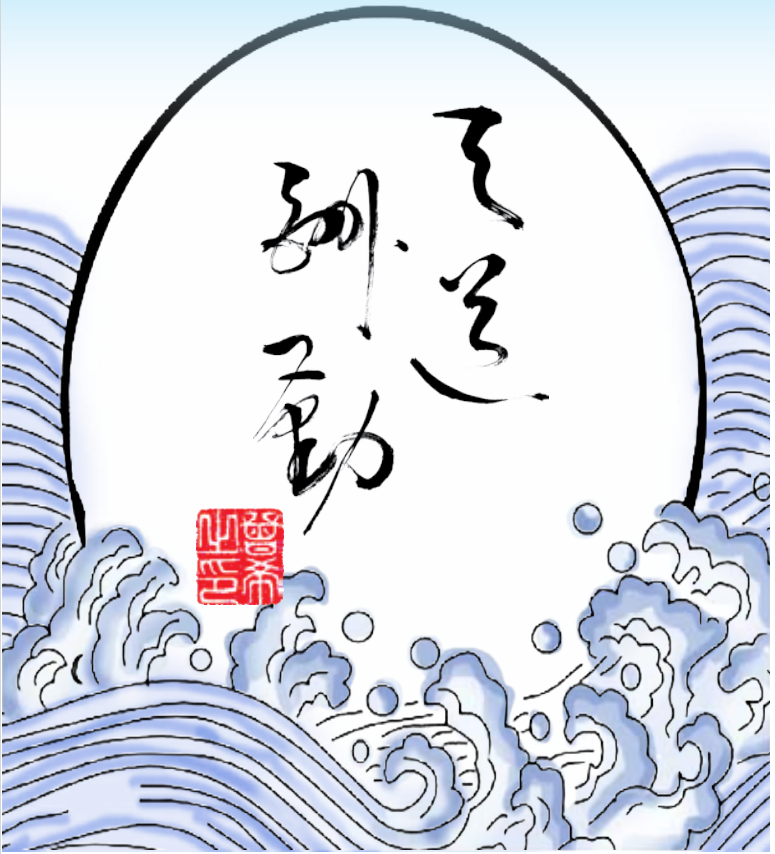
Written by:
Master Larry Sang

Edited by:
Lorraine Wilcox

Cover Design by:
Afriany Simbolon

Illustration by:
Zihan Zhang

Diligence produces rewards



Calligraphy by Larry Sang

Please Read This Information

This book provides information regarding the subject matter covered. The authors are not engaged in rendering legal, medical or other professional advice. If you need medical or legal advice, a competent professional should be contacted. Chinese Astrology and Feng Shui are not get-rich-quick or cure-all schemes. Changes in your life will happen as fast as you are ready for them. Be patient in your study of Chinese Astrology and Feng Shui.

The authors have tried to make this book as complete and accurate as possible. However, there may be typographical or content mistakes. Use this book as a general guide in your study of Chinese Astrology and Feng Shui.

This book was written to educate and entertain. The authors, distributors and the American Feng Shui Institute shall have neither liability nor responsibility to any person with respect to any loss or damage caused, or alleged to be caused by this book.

The following pages of predictions will help you understand trends as they develop through the coming year. Please keep in mind that they are somewhat general because other stellar influences are operative, according to the month, date and exact minute of your birth. Unfortunately, we cannot deal with each person individually in this book.

Table of Contents

PART ONE: Chinese Astrology

Fortunes of the 12 Animals in the Year of The Sheep

How to find your Animal Sign	6
The Sheep	10
The Monkey	12
The Rooster	14
The Dog	16
The Pig	18
The Rat	20
The Ox	22
The Tiger	24
The Rabbit	26
The Dragon	28
The Snake	30
The Horse	32
Li Ming for the Year 2015	35

PART TWO: Folk Methods of Fortune Telling

Liu Ren	41
Omens	47
The Yellow Emperor in the Four Seasons	51

PART THREE: Feng Shui Analysis and Remedies for 2015

Feng Shui Makes the Universe Work for You	55
Preparing Your Home for a Reading	57
Directions to Avoid for Construction this Year	63
Feng Shui Energy (Qi) Pattern for 2015	64
The Center	66
The East Section	68
The Southeast Section	70
The South Section	72
The Southwest Section	74
The West Section	76
The Northwest Section	78
The North Section	80
The Northeast Section	82

PART FOUR: Day Selection Guide to the Year of The Sheep

Introduction to the Day Selection Calendar	85
Calendar Terminology Key	87
12 Months of 2015	88
Ten-Thousand Year Calendar for 2015	116

How to find Your Animal Sign

In order to find your correct animal sign, as well as understand why the Chinese calendar begins in February, and not January, it is important to have a little understanding of the two different Chinese calendars. As with most things Chinese, we look at the Yin and Yang. In Chinese timekeeping, there is a Yin Calendar (Lunar calendar) and a Yang Calendar (Solar calendar).

The Lunar Calendar

The Lunar calendar is perhaps the best known and most popular of the two. Chinese Lunar New Year is frequently celebrated with a lot of pageantry. It is used in one type of Chinese Astrology called Zi Wei Dou Shu, and also in Yi Jing calculations.

The Solar Calendar

The Solar calendar is less well known. The early Chinese meteorologists attempts to gain insight into the cycles of the seasons. From this study, this developed the Solar calendar. This calendar is used in the form of Chinese Astrology called Four Pillars, as well as in Feng Shui. The Chinese were very accurate in their studies. Without computers, and using only observations, they mapped a solar year of 365 days. They missed the actual timing of a year by only 14 minutes and 12 seconds.

The solar year is divided into 24 solar terms. Each lasts about fifteen days. Spring Begins (lichun) is the name of the first day of Spring, and the first solar term. It is exactly midway between the winter solstice and the spring equinox. This is why it always falls on February 4th or 5th. We begin the five elements with wood, so the Chinese New Year begins with a wood month, whether in the Lunar or the Solar calendar. These concepts are derived from the Yi Jing.

Nothing great
is achieved
without passion

後有狂想成
不事大事



Calligraphy by Larry Sang

How to find your Animal Sign

To find your animal sign, start with your birth date. If it is before February 4th (Spring Begins), use the prior year for the Chinese calendar. If it is after February 4th, then use the same birth year. If it is on February 4th, then you need the time of the birth to accurately determine the birth animal. This information is contained in the Chinese Ten-Thousand Year Calendar. (The American Feng Shui Institute has one available as an ebook at www.amfengshui.com). In the following pages, the birth years are listed for each animal, but remember, if your birthday is before February 4th, use the previous year to determine the animal.

The Twelve Animals

Rat



1924, 1936, 1948,
1960, 1972, 1984,
1996, 2008

Ox



1925, 1937, 1949,
1961, 1973, 1985,
1997, 2009

Tiger



1926, 1938, 1950,
1962, 1974, 1986,
1998, 2010

Rabbit



1927, 1939, 1951,
1963, 1975, 1987,
1999, 2011

Dragon



1928, 1940, 1952,
1964, 1976, 1988,
2000, 2012

Snake



1929, 1941, 1953,
1965, 1977, 1989,
2001, 2013

Horse



1930, 1942, 1954,
1966, 1978, 1990,
2002, 2014

Sheep



1931, 1943, 1955,
1967, 1979, 1991,
2003, 2015

Monkey



1932, 1944, 1956,
1968, 1980, 1992,
2004, 2016

Rooster



1933, 1945, 1957,
1969, 1981, 1993,
2005, 2017

Dog



1934, 1946, 1958,
1970, 1982, 1994,
2006, 2018

Pig



1935, 1947, 1959,
1971, 1983, 1995,
2007, 2019

FORTUNES OF THE 12 ANIMALS



The Sheep

1931, 1943, 1955, 1967, 1979, 1991, 2003, 2015

Note: The New Year begins February 4th



Year 2015 belongs to the same animal as your birth year. This is a year of mixed fortunes for the Sheep. Lots of unforeseen changes are in front of middle-aged Sheep. Conflicts with others arise frequently. You are advised to use soft tactics when dealing with difficult situations. Where career is concerned, the

gains will not be equal to the efforts put forth. Money comes and goes, so be prepared for the worst. Do not gamble or make risky investments trying to gain immediate benefit. People born in 1979 will have good opportunities in sales or related to the financial industry. Sheep born in 1967 who are bosses may encounter betrayal or misunderstanding by close partners. Beware of “petty people” and backstabbers. Be patient and humble to avoid conflict. Pay attention to your health during the winter since it is easy to experience an illness or injury, especially from high risk sports. There is a sign of some sort of bleeding; therefore try to avoid daring sports, climbing high, car accidents, and cuts. Generally speaking, in romance Sheep will be quite emotional, argumentative, and may lose control. Single Sheep will be sailing in rough water this year. Be careful - appearances can be deceiving: “the pretty box is empty inside.” Married or attached Sheep born in February, May, or September will tend to have a lot of quarrels this year, so take care to control your temper if you don’t want a relationship to break up. Married sheep should be careful about the involvement of a third person.

Your Benefactor is: Horse

(1930, 1942, 1954, 1966, 1978, 1990, 2002, 2014)

12 Month Outlook For The Sheep

Solar Month	Comments
1st Month Feb 4 th - Mar 5 th	This is not the time to be creative or try something new.
2nd Month Mar 6 th - Apr 4 th	Do not trust anything sight unseen; otherwise you may find yourself in an embarrassing situation.
3rd Month Apr 5 th - May 5 th	Travel can put you in contact with someone who will benefit your career in the future.
4th Month May 6 th - Jun 5 th	Do not rush in your affairs. Your mental processes are not as good as usual.
5th Month Jun 6 th - Jul 6 th	Put off any uncertain projects until you are sure you have examined all the angles.
6th Month Jul 7 th - Aug 7 th	Be conservative and go step by step.
7th Month Aug 8 th - Sep 7 th	Be on guard. You are likely to incur unnecessary expenditures.
8th Month Sep 8 th - Oct 8 th	Average luck. Relying on your own efforts is the best approach.
9th Month Oct 9 th - Nov 7 th	Money prospects are good.
10th Month Nov 8 th - Dec 6 th	Be careful to avoid cuts and minor health problems.
11th Month Dec 7 th - Jan 5 th	Underlying danger awaits you this month. It is easy to be betrayed.
12th Month Jan 6 th - Feb 3 rd	Average luck. Be careful with contracts.

The Monkey

1920, 1932, 1944, 1956, 1968, 1980, 1992, 2004

Note: The New Year begins February 4th



This year the **Hong Luan Star** brings a lot of celebration qi for the Monkey! This is especially true for male Monkeys born in October of 1980 and female Monkeys born in August of 1980. You may get married, have a baby, or have other things to celebrate. There will be ample opportunities for Monkeys who are salaried workers to impress

their bosses. Trying a career switch will bring about good results. For the self-employed who intend to go into a partnership, it is best to approach people born in the Horse or Dog years. Excellent progress can be expected with career and love concerns. However, there is a sign of conflict in relationships. How to handle tangled-up relationships is a problem for the Monkey during 2015. Keep a low profile and stay humble when dealing with people. Don't make rude criticisms when you feel emotional. Otherwise, you will easily be the victim of backstabbing which may slow down your efforts and luck. Money luck moves steadily upwards. When dealing with finances, there may be many temptations to spend it so you should take care with the out-flow of money; this is due to the Jie Sha Star which brings unfavorable qi to the Monkey. This Star's negative influences can bring money loss, injury, or unexpected expenses. Be cautious with your consumption to avoid any large money loss. In health, the physical discomfort you feel is caused by your moodiness, and you must be wary of urinary problems or illness caused by fatigue. The Monkey will find that this is a good year for romance and marriage. For male Monkeys, August is the best time to get married; for females, it is October. For married females, there is a constant threat of a third party ruining your marriage. Married males should be careful of trouble from temptations outside the home.

Your Benefactor is: Rabbit

(1927, 1939, 1951, 1963, 1975, 1987, 1999, 2011)

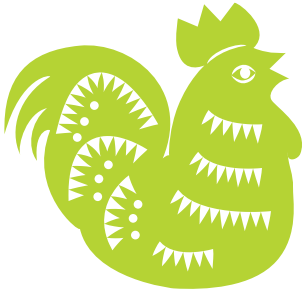
12 Month Outlook For The Monkey

Solar Month	Comments
1st Month Feb 4 th - Mar 5 th	Avoid gambling or financial speculation; it will be a losing game.
2nd Month Mar 6 th - Apr 4 th	This month has moderate luck with neither sight of danger nor major break-throughs.
3rd Month Apr 5 th - May 5 th	Luck is mixed: good and bad. Keep alert and don't take any risks if you are doubtful.
4th Month May 6 th - Jun 5 th	You may encounter pressure and competition in your work, but luck is on your side.
5th Month Jun 6 th - Jul 6 th	Average luck. Watch out for backstabbers. Conflict with others will easily arise.
6th Month Jul 7 th - Aug 7 th	Avoid gambling or financial speculation; it will be a losing game.
7th Month Aug 8 th - Sep 7 th	Opportunities come knocking at the door.
8th Month Sep 8 th - Oct 8 th	You may meet someone you fancy and experience mood swings.
9th Month Oct 9 th - Nov 7 th	Your money luck and career are looking good.
10th Month Nov 8 th - Dec 6 th	Be careful to avoid cuts and minor health problems. You are prone to get angry over the most trivial matters.
11th Month Dec 7 th - Jan 5 th	Be tolerant to prevent quarrels with your loved one, or financial mishaps and injuries.
12th Month Jan 6 th - Feb 3 rd	A very auspicious time for you to plan something or develop a new project.

The Rooster

1921, 1933, 1945, 1957, 1969, 1981, 1993, 2005

Note: The New Year begins February 4th



This is an inauspicious year for the Rooster. The Rooster faces a number of obstacles and setbacks. Be careful of being cheated or sold out by someone you trust. Playing safe is the best policy. You should not set your expectations too high or you will spread yourself too thin. Resist new requests until you have already fulfilled the commitments

already on your own schedule. Focus on what is most important first. Stick with it until you are satisfied with results. Only then should you move on to another task. Money prospects are so-so; the rewards will come from the effort you put into your work, not as a result of a windfall. Be extra cautious in the summer as a wrong decision may result in financial losses. Avoid excessive spending. Put your emotions aside when dealing with people and do not act as a guarantor for others. Otherwise, you will get into trouble with the law. Salaried worker have better luck than the self-employed. Employers will be bogged down by problems such as a shortage of manpower or you may find yourself betrayed by people working for you. The Rooster should avoid making investments on a whim in this Sheep year. Hold your emotions in check when you feel that you are becoming angry. Health-wise, the Rooster should avoid over working and stay away from liquor to protect your health. Where romance is concerned, the Rooster will find this a relatively uneventful year because of certain things that are beyond your control. Those born in 1969 and 1981 should watch out for signs of their lover's infidelity. Lovers and spouses tend to be temperamental, so squabbles may frequently take place. To prevent a breakup, you must control your temper and think twice before you leap.

Your Benefactor is: Snake

(1929, 1941, 1953, 1965, 1977, 1989, 2001, 2013)

12 Month Outlook For The Rooster

Solar Month	Comments
1st Month Feb 4 th - Mar 5 th	Stay away from alcohol or gambling. Males should be careful of falling into a sex trap.
2nd Month Mar 6 th - Apr 4 th	Big gains but also big expenses. You will experience happy moods.
3rd Month Apr 5 th - May 5 th	Be humble when dealing with people to prevent a nasty situation. Beware of injuring limbs in a fall.
4th Month May 6 th - Jun 5 th	Things continually bother you. Keep calm and say less.
5th Month Jun 6 th - Jul 6 th	Beware of a potential robbery. Do not walk on a dark road at night.
6th Month Jul 7 th - Aug 7 th	Everything goes well with money and career. Take advantage of the opportunities.
7th Month Aug 8 th - Sep 7 th	Good news can be expected within the family. Money luck is strong and everything moves forward.
8th Month Sep 8 th - Oct 8 th	Be careful to avoid cuts and minor health problems.
9th Month Oct 9 th - Nov 7 th	Average luck. Beware of a trusted assistant or friend turning against you.
10th Month Nov 8 th - Dec 6 th	Steady and smooth sailing. Daily activities and surroundings are easier than usual to handle.
11th Month Dec 7 th - Jan 5 th	Backstabbers are around. You will be easily caught in squabbles.
12th Month Jan 6 th - Feb 3 rd	A mix of good and bad luck. Avoid visiting anyone sick or attending funerals. This especially applies to those born in 1933.

The Dog

1922, 1934, 1946, 1958, 1970, 1982, 1994, 2006

Note: The New Year begins February 4th



This year has mixed auspicious and inauspicious stars for the Dog. The Dog paddles his canoe against the current. Overall, the signs indicate that you should not be overly optimistic this year. Things change beyond your control. Life changes, whether pre-planned or unexpected, will affect your career or business. No matter whether you are a salaried worker or self-employed, you face uncertain changes, obstacles, and difficulties. By being prepared for any contingency, you can go through the year preventing major mishaps. Things change faster than you can imagine. Do not engage into a verbal agreement with anyone. Make sure important things are in writing. Take extra care before you sign a contract or document. There is a sign of conflict in relationships. Be wary of a trusted partner or friend turning against or betraying you. How to handle tangled relationships is the problem for the Dog in 2015. Career and money luck alternate between auspicious and inauspicious. Be wary of business swindles. If you intend to go into a partnership in this Sheep year, it is beneficial to approach someone born in Tiger or Horse years. Partnerships with people born in summer of the Dragon year are not beneficial. In 2015, female Dogs have better luck. Salaried workers can look forward to a promotion or raise. Romance runs hot and cold. Try your best to control your temper to prevent a relationship from breaking down. Single female Dogs are happy, but the Male Dog is not. Married couples find it easy to have a third-party intruder. Health-wise, you may experience discomfort with insomnia, stress, or digestive problems.

Your Benefactor is: Ox

(1925, 1937, 1949, 1961, 1973, 1985, 1997, 2009)

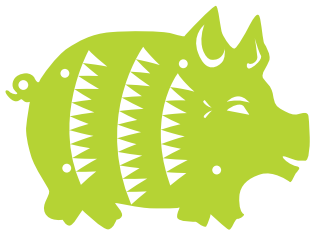
12 Month Outlook For The Dog

Solar Month	Comments
1st Month Feb 4 th - Mar 5 th	It is not advised to embark on new plans or ventures.
2nd Month Mar 6 th - Apr 4 th	Things and people are not quite what they appear to be. Be careful of a break-in.
3rd Month Apr 5 th - May 5 th	Make friends with caution. Males should be careful of a sex trap.
4th Month May 6 th - Jun 5 th	Expenses for the month are uncertain. Your usual good judgment is at low ebb.
5th Month Jun 6 th - Jul 6 th	Beautiful sunshine. Totally enjoyable!
6th Month Jul 7 th - Aug 7 th	Auspicious money luck. Things are to your satisfaction.
7th Month Aug 8 th - Sep 7 th	Problems can be expected inside and outside of the family.
8th Month Sep 8 th - Oct 8 th	Average luck. Investments should be made only after careful consideration.
9th Month Oct 9 th - Nov 7 th	Average luck. Be careful with contracts.
10th Month Nov 8 th - Dec 6 th	Watch out for the flu or cuts.
11th Month Dec 7 th - Jan 5 th	Double-check all work, especially that done by other people on your behalf.
12th Month Jan 6 th - Feb 3 rd	Business ventures in far off places are promising.

The Pig

1923, 1935, 1947, 1959, 1971, 1983, 1995, 2007

Note: The New Year begins February 4th



The Sheep year is one of mixed fortune for the Pig. Career and money matters have neither signs of danger nor major breakthrough. Where career is concerned, your rewards will be proportional to the efforts you put in.

Therefore, the harder you work, the more you gain. You may encounter difficulties and obstacles, but these can be overcome. Try not to set your expectations too high or you will be bogged down by endless problems like finances or shortage of manpower. Be extra careful from April 5th through May 4th, since a wrong decision may result in financial losses. Watch your cash-flow and budget wisely. Be practical in whatever you do and act within the confines of your own abilities. Do not trust anyone blindly lest you get cheated. You will find it more rewarding to do everything on your own. Salaried workers should be careful of disputes with superiors or colleagues over trivial matters; mind your own business and walk away from an argument instead of being drawn into it. Those born in 1959 should watch out for robberies or break-ins. Windfalls are not forthcoming this year. Avoid financial speculation and gambling. Health-wise, watch out for problems in the digestive system; the physical discomfort you feel is caused by your moodiness due to too much stress. Romance will come and go. It is going to be a complicated and confusing year. To avoid being cheated, refrain from giving too much in a relationship. For married couples, disputes with your loved one will occur frequently. This is especially true for married people born in 1959. There are danger signs for getting involved in scandalous affairs.

Your Benefactor is: Rat

(1924, 1936, 1948, 1960, 1972, 1984, 1996, 2008)

12 Month Outlook For The Pig

Solar Month	Comments
1st Month Feb 4 th - Mar 5 th	People around you may give you sudden trouble with their gossip.
2nd Month Mar 6 th - Apr 4 th	Keep calm or you will cause a mess.
3rd Month Apr 5 th - May 5 th	Stay on high alert. Be careful of money loss.
4th Month May 6 th - Jun 5 th	Auspicious luck. Work hard and things will come to you.
5th Month Jun 6 th - Jul 6 th	There are signs of unexpected gains.
6th Month Jul 7 th - Aug 7 th	Average luck.
7th Month Aug 8 th - Sep 7 th	Do not attend funerals or visit the sick in hospitals.
8th Month Sep 8 th - Oct 8 th	Avoid lending money to others or acting as a guarantor. Be careful of money loss.
9th Month Oct 9 th - Nov 7 th	Avoid conflict with others and mind your own business! Employees can look forward to a promotion.
10th Month Nov 8 th - Dec 6 th	Luck is low. To be safe, pay more attention to your health and do not visit sick people.
11th Month Dec 7 th - Jan 5 th	Normal luck. Relaxation is the top priority.
12th Month Jan 6 th - Feb 3 rd	Exceptionally good for venturing overseas.

The Rat

1924, 1936, 1948, 1960, 1972, 1984, 1996, 2008

Note: The New Year begins February 4th



Compared with last year, your luck is moving up. In career, you should put in more time and work hard; obstacles in the beginning can be overcome and will ultimately benefit you. When dealing with colleagues or friends, care must be taken to prevent acts of sabotage by others because of jealousy. In 2015, frustration in the form of gossip or rumors will plague you. Try to be humble at all time to avoid a nasty situation. The self-employed have more opportunities for development than salaried workers. For the self-employed, this is an exceptionally good year for venturing overseas to push on with your career. You will experience good fortune if you venture abroad, whether it is for studies, career, or emigration. There are signs of unexpected gains and benefactors. Employees may find themselves being thought of highly by bosses, but at the same time ostracized by their colleagues. The lower your profile, the better your chances of success. Money prospects are average; the rewards will depend on your efforts at work. If you are an artist or a writer, money will come consistently. Money luck in early spring is like a ball bouncing up and down. Watch out for unexpected consumption; try to avoid being carried away by expensive plans and activities. Be particularly cautious in the months of February and March. In health, watch out for stress and trouble which can cause digestive problems. Romance comes a little too easily. If you abuse this and live a life of excess, it will cause trouble. People who are in love for the first time should be careful to not get cheated. Married female Rats could get trapped by a male Monkey.

Your Benefactor is: Pig

(1923, 1935, 1947, 1959, 1971, 1983, 1995, 2007)

12 Month Outlook For The Rat

Solar Month	Comments
1st Month Feb 4 th - Mar 5 th	A month of gains and losses. Do not expect a lot. Easy come, easy go.
2nd Month Mar 6 th - Apr 4 th	You have to watch the situation carefully. Financial losses can be prevented with careful judgment but not with arrogance.
3rd Month Apr 5 th - May 5 th	There are good opportunities and helpful people. Everything comes easily for you.
4th Month May 6 th - Jun 5 th	Money prospects and career look good. This is a great time to expand your career or develop something new.
5th Month Jun 6 th - Jul 6 th	A month of mixed luck: good and bad. There are many hidden opportunities and dangers.
6th Month Jul 7 th - Aug 7 th	Rumors and gossip come out of nowhere.
7th Month Aug 8 th - Sep 7 th	Good luck for social relationships and romance (peach blossom). A sunny time.
8th Month Sep 8 th - Oct 8 th	Make new business plans. It is time to review your goals to see if they need updating.
9th Month Oct 9 th - Nov 7 th	Things may look calm on the surface but there are hidden thorns within.
10th Month Nov 8 th - Dec 6 th	A business venture will prove profitable.
11th Month Dec 7 th - Jan 5 th	There will be some disharmony in personal relationships.
12th Month Jan 6 th - Feb 3 rd	It is easy to be stabbed in the back. Money prospects and career look good.

The Ox

1925, 1937, 1949, 1961, 1973, 1985, 1997, 2009

Note: The New Year begins February 4th



Due to the Po Sui Star in the Ming Palace of the Ox, this is a year of conflict. Luck will be like a bouncing ball: up and down. Advancing upward is difficult, while decline comes easily. Changes are obvious within your life. Unexpected events will affect your career or business. Be patient

and ignore complaints. Work without expecting a fair return. Hard work and persistence is the only way to move your life forward. People born in 1973 will have good opportunities in sales and work related to the entertainment industry. Your personality and its impact on your surroundings will be in top form. You should be able to promote your ideas and plans successfully. Oxen born in 1973 who are bosses may encounter betrayal or misunderstanding from close partners. Be patient and humble to avoid conflicts. In money prospects, there are signs of consumption. Money comes and goes easily for those doing business. Investments should be made only after careful consideration. Learn to spend your money wisely and avoid financial speculation. August is the time to be on guard. Be extra carefully when signing contracts to prevent financial losses. Health-wise, watch out for backaches and painful problems of the limbs which are likely to be prolonged. Some inauspicious stars in the travel palace bring the possibility of a road accident or fall. Be careful of cuts and burns. Your luck in romance is fine and colorful if you are a single Ox. You can find company easily. A divorced Ox can have a second spring. A married Ox might find a lot of disagreement with his or her spouse this year, and must stay away from extramarital affairs. Otherwise, it may lead to separation

Your Benefactor is: Rooster

(1933, 1945, 1957, 1969, 1981, 1993, 2005)

12 Month Outlook For The Ox

Solar Month	Comments
1st Month Feb 4 th - Mar 5 th	A month of mixed good and bad. You find conflicts and pressure in your job.
2nd Month Mar 6 th - Apr 4 th	Things go upward fairly well. Money luck is unstable.
3rd Month Apr 5 th - May 5 th	Auspicious luck. Things are to your satisfaction.
4th Month May 6 th - Jun 5 th	Bite your tongue and avoid gossip. A misunderstanding could occur.
5th Month Jun 6 th - Jul 6 th	Be careful to avoid an illness which may come to you. To be safe, do not visit sick people or hospitals.
6th Month Jul 7 th - Aug 7 th	Luck is moving upward noticeably. Work for your goal and it will come out quite well.
7th Month Aug 8 th - Sep 7 th	There will be some disharmony in personal relationships.
8th Month Sep 8 th - Oct 8 th	Your luck and moods are like a bouncing ball: high and low.
9th Month Oct 9 th - Nov 7 th	Luck is low. Your daily routine of work will be tougher than usual.
10th Month Nov 8 th - Dec 6 th	Advice about risky investment is untrustworthy.
11th Month Dec 7 th - Jan 5 th	Average luck. Be careful with contracts.
12th Month Jan 6 th - Feb 3 rd	This month can bring conflicts and tension.

The Tiger

1926, 1938, 1950, 1962, 1974, 1986, 1998, 2010

Note: The New Year begins February 4th



Tian Xi is shining above along with other auspicious stars. This brings a lot of good opportunities and chances to create something new. It doesn't matter if these opportunities are local or from distant lands; they all have good potential. With hard work, your plans and goals can generally be achieved; career and money luck is strong. There are lots

of opportunities waiting for you, so grab this auspicious luck and work hard; even when you face obstacles, they can be overcome and will ultimately benefit you. The more you work, the more you gain. Though you may face some pressure and competition at work, luck is on your side. However, it is easy to have gossip around you. A relationship within family or outside the family does not go very harmoniously. Money comes and goes in abundance. Although money luck is good, the rewards come only from the effort you put forth in your work and not as a result of windfall. Therefore, avoid risky investment and gambling. Health is okay. Stay away from strenuous exercise and avoid climbing heights. Love is rosy and this is a good year for the single Tiger to get married, but avoid ruining a perfect relationship in a moment of willfulness. Female Tigers should be wary of flattering men; otherwise, trouble will follow. This is also an easy year for the female Tiger to get pregnant. Because of quite strong Peach Blossom qi for both male and the female Tigers, a married Tiger should not pick that wild blossom from the roadside or it will be difficult to get rid of and will cause headaches.

Your Benefactor is: Dog

(1922, 1934, 1946, 1958, 1970, 1982, 1994, 2006)

12 Month Outlook For The Tiger

Solar Month	Comments
1st Month Feb 4 th - Mar 5 th	As the year begins, you'll be in a happy mood. A potential lover may enter your life.
2nd Month Mar 6 th - Apr 4 th	Popularity and optimism make this month satisfying.
3rd Month Apr 5 th - May 5 th	You are treading on a slippery road. Don't do anything risky.
4th Month May 6 th - Jun 5 th	Watch out for an illness or flu. Don't overwork yourself.
5th Month Jun 6 th - Jul 6 th	Your luck is good in all aspects of life. Mainstream money moves steadily upward.
6th Month Jul 7 th - Aug 7 th	Luck alternates between good and bad.
7th Month Aug 8 th - Sep 7 th	Be cautious of a disturbance in love or other relationships.
8th Month Sep 8 th - Oct 8 th	Luck is bumpy. When you gain, watch out for possible loss.
9th Month Oct 9 th - Nov 7 th	Be patient and avoid becoming too emotional. Don't expect too much this month.
10th Month Nov 8 th - Dec 6 th	An auspicious time to create something new or develop business abroad.
11th Month Dec 7 th - Jan 5 th	Be conservative. This month underlying danger awaits you.
12th Month Jan 6 th - Feb 3 rd	There is a sign of money loss. Be careful.

The Rabbit

1927, 1939, 1951, 1963, 1975, 1987, 1999, 2011

Note: The New Year begins February 4th



A most auspicious year for the Rabbit! Numerous opportunities await the Rabbit in 2015. Career and money prospects are rewarding. Everything goes smoothly, particularly for female Rabbits. Grab these golden opportunities by expanding your social circle to build up your career.

You will be sailing your boat with the wind. Even when facing difficulties, there are always helpful people who show up and offer assistance. Luck is smooth for everything you plan. Most projects hit the target. Money luck is exceptionally good, like bamboo shoots coming up after the spring rains. Yet this does not mean that you can sit at home and wait for the money to roll into your bank account; you must make full use of the year by working hard and fighting for what you want. If you push ahead with your plans in the spring time, your career and money matters will end up to your satisfaction. Health-wise, there are signs of many minor discomforts, but nothing serious. Take precaution against ailments of the digestive system and beware of food poisoning. Watch out for contagious diseases. Where romance is concerned, a fruitful relationship awaits the single Rabbit this year. Autumn and winter are the best times to build a love nest. But there is the danger of getting into a scandalous affair. Married couples are quite emotional and easily lose control. Be more communicative with your partner to avoid misunderstandings. Rabbits born in 1963 and 1975 should watch for signs of their lover's unfaithfulness.

Your Benefactor is: Dragon

(1928, 1940, 1952, 1964, 1976, 1988, 2000, 2012)

12 Month Outlook For The Rabbit

Solar Month	Comments
1st Month Feb 4 th - Mar 5 th	Career and money prospects are everything you expect.
2nd Month Mar 6 th - Apr 4 th	Not a beneficial time for going out late at night. Guard against robbery.
3rd Month Apr 5 th - May 5 th	You will be easily caught in squabbles. Try to control your temper to prevent a relationship from breaking down.
4th Month May 6 th - Jun 5 th	A great time to expand your career or develop a new project.
5th Month Jun 6 th - Jul 6 th	It is a month of loss and gain.
6th Month Jul 7 th - Aug 7 th	Stay flexible throughout the month. Proceed slowly and deliberately with any changes you hope to enact.
7th Month Aug 8 th - Sep 7 th	This month can bring conflict and tension.
8th Month Sep 8 th - Oct 8 th	Things are uncertain. A wait-and-see attitude is the best policy.
9th Month Oct 9 th - Nov 7 th	Avoid visiting the sick and attending funerals.
10th Month Nov 8 th - Dec 6 th	Bathe in the pleasant breeze! Happy moods with beautiful blossoms.
11th Month Dec 7 th - Jan 5 th	Average luck. Be careful with contracts.
12th Month Jan 6 th - Feb 3 rd	This is the best time to invest in something you want to do, or the ideal time to get married.

The Dragon

1928, 1940, 1952, 1964, 1976, 1988, 2000, 2012

Note: The New Year begins February 4th



The Year of the Sheep is relatively smooth sailing for the Dragon. Career and money prospects are looking up! Fame and money luck are under your nose. Seize the opportunity to take a big step forward and build up your lifetime foundations.

With extra strong luck, you receive double the benefit for the work exerted. Even if there are obstacles and difficulties, you can easily overcome them. Salaried workers can look forward to a change of environment in February. It is a good time for those born in 1976 to try their luck in everything. The Dragon must persist in taking the initiative and be decisive to make the Sheep year gainful. The self-employed encounter a sign of conflict with others. There is a Chinese saying “Harmony breeds prosperity;” therefore, the best policy is to be humble at all times and to try to maintain a cordial relationship with the people around you. Money luck is easy come, easy go for those doing business. To prevent financial loss, avoid lending money or acting as guarantors for others in October and November. Health-wise, you may suffer from allergies and the flu. Take preventive measures against colds and watch out for sprains and fractures. Romantic encounters are abundant, but there is no sign of a permanent commitment for most single Dragons. Do not expect too much from relationships. You will only be asking trouble if you ignore the unfavorable time factor; don’t persist in being willful and go for too much passion. Married Dragons should not go hunting for Peach Blossoms or they will be difficult to get rid of.

Your Benefactor is: Sheep

(1919, 1931, 1943, 1955, 1967, 1979, 1991, 2003, 2015)

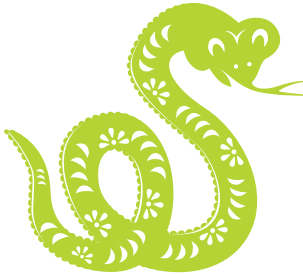
12 Month Outlook For The Dragon

Solar Month	Comments
1st Month Feb 4 th - Mar 5 th	Things are bothersome because of gossip. Everything is topsy-turvy.
2nd Month Mar 6 th - Apr 4 th	Good for traveling and going abroad; you may receive some unexpected benefit.
3rd Month Apr 5 th - May 5 th	Things turn out well and you have something good to celebrate!
4th Month May 6 th - Jun 5 th	Average luck. Things move upward fairly well.
5th Month Jun 6 th - Jul 6 th	This is a relatively unstable month; do not be overconfident.
6th Month Jul 7 th - Aug 7 th	Be conservative; pay more and receive less.
7th Month Aug 8 th - Sep 7 th	A very busy month. Money luck shines from above!
8th Month Sep 8 th - Oct 8 th	Things are relative peaceful except for the third week of the month when you should watch out for financial mishaps.
9th Month Oct 9 th - Nov 7 th	Keep on high alert. Prevent unnecessary over spending.
10th Month Nov 8 th - Dec 6 th	Avoid lending money or acting as a guarantor for others.
11th Month Dec 7 th - Jan 5 th	Everything goes well in money and career.
12th Month Jan 6 th - Feb 3 rd	Strong money luck but be careful with contracts.

The Snake

1929, 1941, 1953, 1965, 1977, 1989, 2001, 2013

Note: The New Year begins February 4th



The Snake's luck alternates between good and bad in the Sheep year. Be conservative. Everything is blurry. This is not the time to be creative or try something new. Stay calm. Try slow evolution, not revolution. Where career is concerned, your gains will not be proportional to the great effort you put in. Work will take double effort to

receive a single gain. Your hard work will not necessarily pay off. You will frequently meet with obstacles in the things you do or others may sabotage your efforts. There is a general feeling of helplessness and frustration especially in late summer. Try not to get involved in matters that do not concern you to prevent trouble and losses. Salaried workers should consider taking classes in self-improvement or job-related courses. The period from November 7th to January 5th of the Sheep year is a gainful period for the Snake. You must make full use of these two months to work hard and fight for what you want. Money luck wanes this year. Don't invest in risky or short-cut schemes. Cast aside any thoughts of greed if you want to prevent financial mishaps. Avoid being overworked and stay away from gambling and alcohol. Health-wise, there are no serious illnesses and you will be relatively healthy, but watch out for migraines or insomnia due to over-work. Observe food hygiene. There is a possible omen of wearing mourning clothes for the elderly in your family. Avoid visiting funerals. Where romance is concerned, the Snake's love life is complicated and full of change this year. The path to romance is full of hiccups for single Snakes. By being soft and not stubborn, you can avoid trouble. Married Snakes must avoid getting involved in Peach Blossom; otherwise you will have endless troubles.

Your Benefactor is: Monkey

(1920, 1932, 1944, 1956, 1968, 1980, 1992, 2004)

12 Month Outlook For The Snake

Solar Month	Comments
1st Month Feb 4 th - Mar 5 th	This is a challenging month. Luck is a mix of bad and good. Things are difficult to control.
2nd Month Mar 6 th - Apr 4 th	You should consider taking classes in self-improvement or job-related courses.
3rd Month Apr 5 th - May 5 th	Luck is noticeably moving upwards, but you still pay more and receive less.
4th Month May 6 th - Jun 5 th	It is suitable to be calm and relaxed. Make use of this opportunity to refresh yourself.
5th Month Jun 6 th - Jul 6 th	Things are not smooth and you may feel depressed.
6th Month Jul 7 th - Aug 7 th	There is a hidden sign of misunderstanding and conflict.
7th Month Aug 8 th - Sep 7 th	New opportunities come your way. A long distance vacation may bring unexpected benefit.
8th Month Sep 8 th - Oct 8 th	Average luck. Stress and tension could be higher than usual.
9th Month Oct 9 th - Nov 7 th	A month of consumption. Be careful to avoid cuts and minor health problems.
10th Month Nov 8 th - Dec 6 th	Money prospects are good.
11th Month Dec 7 th - Jan 5 th	Luck is strong; a business venture will prove profitable.
12th Month Jan 6 th - Feb 3 rd	Things change a lot and are difficult to control.

The Horse

1918, 1930, 1942, 1954, 1966, 1978, 1990, 2002, 2014

Note: The New Year begins February 4th



The Sheep year promises to be straight sailing with a good career for the Horse. Everything will come easily for you. Salaried workers can look forward to a promotion and raise while the self-employed can expand their business. Help will come from an unexpected source and things will go your way. Money prospects

are abundant, especially from abroad where you could have a beautiful gain. Your local business must prepare to face some kind of difficulty; it will show up before you can achieve your goals. You need to handle these difficulties with patience. Don't make hurried decisions or you could receive a loss. Your money luck is strong, but it is not advisable to cooperate with others on something new during the period of August 7th to October 7th. Students can expect academic results. Seize this opportunity to take a big step forward and build your lifetime foundations. Health-wise, due to the Bing Fu Star in your Ming Palace, this is quite an unstable year. Minor illnesses may visit you non-stop; injuries to your limbs may result from accidents or falls. Those born in 1966 should refrain from overworking lest they be stricken by illness. Those born in 1954 and 1966 should refrain from visiting the sick or attending wakes. Where romance is concerned, a fruitful relationship awaits the female this year. You will be able to walk down the aisle successfully and form a perfect union. Unfortunately, the male does not share the same luck. Romantic relationships are unstable and could be ruined by a third party. Married Horses will run hot and cold; quarrels will be easily aroused.

Your Benefactor is: Tiger

(1926, 1938, 1950, 1962, 1974, 1986, 1998, 2010)

12 Month Outlook For The Horse

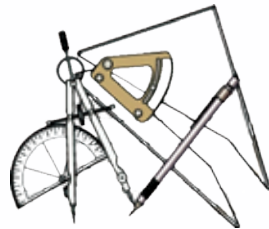
Solar Month	Comments
1st Month Feb 4 th - Mar 5 th	A stable month for everything.
2nd Month Mar 6 th - Apr 4 th	Opportunities lie ahead. A long distance vacation may provide unexpected benefits.
3rd Month Apr 5 th - May 5 th	There is a hint of anger or despair. Keep your emotions tightly controlled in all situations to avoid conflicts.
4th Month May 6 th - Jun 5 th	Lots of confusion in dealing with things. Be cautious of scandals and money loss.
5th Month Jun 6 th - Jul 6 th	Be conservative. It is likely that conflicts occur. This is the month to say less.
6th Month Jul 7 th - Aug 7 th	Be cautious of your speech in public to avoid unnecessary contention.
7th Month Aug 8 th - Sep 7 th	A month of consumption. Try to budget wisely.
8th Month Sep 8 th - Oct 8 th	Expenses for the month are uncertain. Relaxation is the top priority.
9th Month Oct 9 th - Nov 7 th	Enjoy the sunny days. Any difficulty can be overcome.
10th Month Nov 8 th - Dec 6 th	Money prospects are good.
11th Month Dec 7 th - Jan 5 th	Make sure you do not enter into any verbal agreements.
12th Month Jan 6 th - Feb 3 rd	Average luck. You should refrain from visiting the sick or attending wakes.

It is foolish
to be smarter
than necessary

是為愚者
道信聰明



Calligraphy by Larry Sang



LI MING



TABLE 1

LI MING (establish fate): STEP 1: DETERMINE YOUR PALACE

立命 for 2015

This is another system for making annual predictions:

- First, use Table 1, based on your month and time of birth.
- Then the results of Table 1, and use them in Table 2, along with your year of birth, to find the palace of Li Ming for 2015
- Once you know the palace of Li Ming, read the prediction that follows for that palace.

Birth Hour:	Born After:											
	Jan 21 1st Month	Feb 19 2nd Month	Mar 20 3rd Month	Apr 20 4th Month	May 21 5th Month	Jun 21 6th Month	Jul 23 7th Month	Aug 25 8th Month	Sep 23 9th Month	Oct 25 10th Month	Nov 22 11th Month	Dec 22 12th Month
Zi	Mao	Yin	Chou	Zi	Hai	Xu	You	Shen	Wei	Wu	Si	Chou
Chou	Yin	Chou	Zi	Hai	Xu	You	Shen	Wei	Wu	Si	Chou	Man
Yin	Chou	Zi	Hai	Xu	You	Shen	Wei	Wu	Si	Chou	Mao	Yin
Mao	Zi	Hai	Xu	You	Shen	Wei	Wu	Si	Chou	Mao	Yin	Chou
Chou	Hai	Xu	You	Shen	Wei	Wu	Si	Chou	Mao	Yin	Chou	Zi
Si	Xu	You	Shen	Wei	Wu	Si	Chou	Mao	Yin	Chou	Zi	Hai
Wu	Yin	Chou	Zi	Hai	Xu	You	Shen	Wei	Wu	Si	Chou	Xu
Wei	Hai	Xu	You	Shen	Wei	Wu	Si	Chou	Mao	Yin	Chou	You
Shen	Wei	Wu	Si	Chou	Mao	Yin	Chou	Zi	Hai	Xu	You	Shen
You	Wu	Si	Chou	Mao	Yin	Chou	Zi	Hai	Xu	You	Shen	Wei
Xu	Hai	Xu	You	Shen	Wei	Wu	Si	Chou	Mao	Yin	Chou	Wei
Hai	Chou	Mao	Yin	Chou	Zi	Hai	Xu	You	Shen	Wei	Wu	Si

Notes:

These months are different from the solar (Feng Shui/Four Pillars) months, and also are different from the lunar months. They begin on the 15th of the Twenty-Four Segs. If born within a day of these month dates, please consult a Ten-Thousand Year Calendar to determine exactly which is your birth month in this system. It is not necessary for you to understand the Chinese terms in the tables. Just follow the tables to the correct palace for you.

立命

LI MING (establish fate): STEP 2: PALACE FOR A WEI (SHEEP) YEAR

立命 for 2015

LI Ming:	Birth Year:											
	Int Zi	Ca Chou	Tiger Yin	Rabbit Mao	Dragon Chen	Snake Si	Snake Wu	Sheep Wei	Monkey Shou	Rooster You	Dog Xu	Pig Hai
Zi	Si	Wu	Wei	Shen	You	Xu	Hai	Zi	Chou	Yin	Mao	Chen
Chou	Wu	Wei	Shen	You	Xu	Hai	Zi	Chou	Yin	Mao	Chen	Si
Yin	Wei	Shen	You	Xu	Hai	Zi	Chou	Yin	Mao	Chen	Si	Wu
Mao	Shen	You	Xu	Hai	Zi	Chou	Yin	Mao	Chen	Si	Wu	Wei
Chen	You	Xu	Hai	Zi	Chou	Yin	Mao	Chen	Si	Wu	Wei	Shen
Si	Xu	Hai	Zi	Chou	Yin	Mao	Chen	Si	Wu	Wei	Shen	You
Wu	Hai	Zi	Chou	Yin	Mao	Chen	Si	Wu	Wei	Shen	You	Xu
Wei	Zi	Chou	Yin	Mao	Chen	Si	Wu	Wei	Shen	You	Xu	Hai
Shen	Chou	Yin	Mao	Chen	Si	Wu	Wei	Shen	You	Xu	Hai	Zi
Yin	Wei	Mao	Chou	Si	Wu	Wei	Shen	You	Xu	Zi	Chou	Yin
Xu	Mao	Chen	Si	Wu	Wei	Shen	You	Xu	Zi	Chou	Yin	Mao
Hai	Chen	Si	Wu	Wei	Shen	You	Xu	Zi	Chou	Yin	Mao	Chen

Notes:

- ★ Take the Palace of Li Ming, found in Table 1, and compare it to the year of birth to find the palace for 2015, a Wei (Sheep) year.
- ★ Use January 21st as the beginning of the new year for finding the birth year. If this date falls within one day of January 21st, check in a Ten-Thousand Year Calendar to be sure. If the birth date is between January 1st and January 20th, consider the person as belonging to the previous year in this system.
- ★ The predictions described below go from January 20th, 2015 until January 19th, 2016.

LI MING PALACE READING



Zi
子

If Li Ming is here, the auspicious star Yue De shines above, so your luck moves upward. The self-employed have more opportunities for further development than salaried workers. You experience good fortune if you venture abroad whether it is for studies, career, or emigration. There are signs of unexpected gains and benefactors. Money prospects are average; the rewards depend on your efforts at work. With the Xiao Hao star here, watch out for unexpected consumption. Avoid gambling or financial speculation; it will be a losing game. Avoid stress brought on by over-working.

Chou
丑

This year Sui Po is in your Ming Palace and Tai Sui is opposite, so it is a year of breakthrough or changes. Conflicts with others arise easily. Advancing upward is difficult while decline comes easy. It is not a year to expand or to be overly optimistic. Things suddenly change beyond your control. With the inauspicious Da Hao star, money luck is not what you expected; this is a sign of an increase in unnecessary expenditures. Watch out for cash-flow problems and budget wisely. Be extra careful when signing contracts to prevent financial loss. This year is also unfavorable for legal affairs.

Yin
寅

If Li Ming here, you will find this a blessed year. Good news can be expected within the family because auspicious stars are together with Tian Xi. Your good money prospects will enable your savings to grow. Career and money prospects are in your favor. It is easy to get married or have a baby this year. A promotion or pay raise will come to the salaried worker. Although money luck is good, the rewards will come only from the effort you put forth in your work, not as a result of a windfall. A relationship within the family does not go quite so harmoniously. Stay away from strenuous exercise and avoid climbing to heights.

Mao
卯

It is significant that Lu Cun is together with two other auspicious stars, Golden Cabinet and Jiang Xing. If Li Ming is here, you can make use of this strong money qi to embark on a new career or expand an existing business. Good fortune goes hand in hand with you, putting you in the right place at the right time. Work hard to accomplish your goals, and do all that you can to boost business prospects. Career and money matters end up to your satisfaction. A fruitful relationship waits for you this year. But there is the danger of getting involved in a scandal.

Chen

辰

A number of inauspicious stars mix with auspicious stars. If Li Ming is here, the prospects are mixed between sweet and sour. Be practical in whatever you do. Frustration, in the form of gossip or rumors will plague you. Try to be humble at all times to avoid a nasty situation. There are signs of unexpected gains and unnecessary expenditures. Money luck comes and goes easily for those doing business. To prevent financial losses, avoid lending money or acting as a guarantor for others. Romantic encounters are abundant, but there is no sign of a permanent commitment. Do not expect too much from relationships.

Si

巳

If Li Ming here, your luck alternates between good and bad. Be conservative. Everything is blurry. This is not the time to be creative or try something new. Stay calm. Try slow evolution, not revolution. Work will take double the effort to receive a single gain. There is a general feeling of helplessness and frustration. Money prospects are average; your gains will not be proportional to the great effort you put in. Money luck wanes this year. Don't invest in risky schemes or try to take short-cuts. With an inauspicious star Diao Ke, there is the omen of wearing mourning clothes for an elder in the family. Avoid going to funerals.

Wu

午

It is significant that a number of auspicious stars are together with Wen Chang in same palace. If Li Ming is here, this is an excellent time to embark in higher education or learning something new. Students can expect good academic results. Salaried workers can look forward to a promotion and raise while the self-employed can expand their business. Money prospects are abundant, especially from abroad, where you can have beautiful gain. Due to the Bing Fu Star, this is quite an unstable year for health. Minor illness may visit you non-stop; injuries to your limbs may results from accidents or falls.

Wei

未

If Li Ming here, it is a year of challenge and unstable conditions. Lots of unforeseen changes are in front of you. It is appropriate to be cautious and prudent in all matters. This is a year for defense not for aggression. Career and money luck are like a bouncing ball: up and down. There are a number of obstacles to overcome. Risky investments on a whim should be avoided. Beware of backstabbers. There is a sign of some sort of bleeding. Watch out for injuries caused by sharp metal objects. Stay far away from places where there are wars or riots and activities involving alcohol, sex, or gambling.

Shen

申

Two auspicious stars, Tai Yang and Hong Luan, shine above. Life is happy and smooth. Totally enjoyable! You may get married, have a baby, or experience other celebrations. There will be ample opportunities. Things are average to good, with lots of social opportunities and Peach Blossom. Money luck moves steadily upwards. You should watch expenditures due to the *Jie Sha Star* which brings in unfavorable qi; it can bring money loss, injury, or unexpected expenses. Be cautious; indulgence brings the consumption of many small things. This is a good year for romance and marriage.

You

酉

If Li Ming here, you will face a number of obstacles and setbacks. Watch out for being cheated or sold out by someone you trusted. Playing safe is the best policy. There are signs of pressure from competition, backstabbing, or even lawsuits. There is a lot of confusion in dealing with things. Put your emotions aside when dealing with people and do not act as a guarantor for others. The safest and best policy is to be humble at all times so as to maintain a cordial relationship with people. This is a relatively uneventful year for romance. Squabbles frequently take place.

Xu

戌

When Li Ming is here, it is a mixed year that alternates between auspicious and inauspicious because Tai Yin is mixed with inauspicious stars. Luck is like a canoe against the current. Overall, do not be overly optimistic this year. There are numerous opportunities but obstacles also await you. Things will easily become tangled. Though there are signs of conflict in relationships and pressure from competition, things can be accomplished by expending great effort and being prudent in all matters. Avoid attending funerals.

Hai

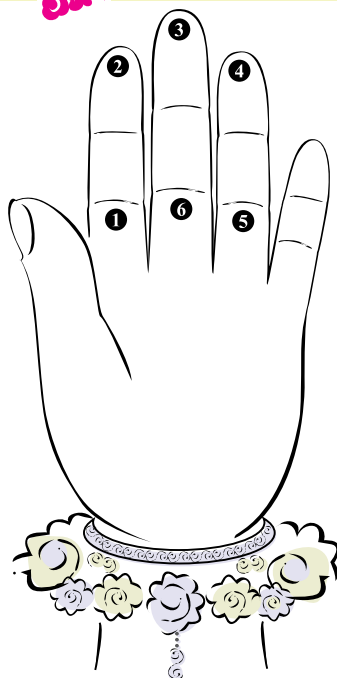
亥

It is significant that the star Yi Ma shines in the opposite palace; there are good opportunities for money luck if you go far from your current working place. There are signs of job changes or moving your residence. Because inauspicious stars also within the Ming palace, be patient and do not get discouraged easily. Indulgence brings unexpected consumption of small things. It is not a year to expand or to be overly optimistic. Whatever is accomplished requires double the effort to receive a single gain. Make sure important things are in writing. Take extra care before you sign a contract or document.

LIU REN



LIU REN (六壬)(小六壬)



1. Great Peace
2. Back & Forth
3. Hastening Happiness
4. Red Mouth
5. Small Auspiciousness
6. Empty & Lost

Calculation:

When something out of the ordinary spontaneously happens, you can determine the meaning of the omen with *Liu Ren*.

Here is the calculation:

1. Use the left hand. Start in position 1, Great Peace (大安 da an) and always move clockwise.
2. Count clockwise through the six positions for today's *lunar* month. The Great Peace position corresponds to the first lunar month. (Refer to *Ten-Thousand Year Calendar* page at the end of this *Guide*. Find today's date, then read the month number at the top of the column).
3. Count the position found in Step 2 as the first day of the lunar month. Count clockwise through the six positions to today, the current day of the lunar month. (Find today's date in the *Ten-Thousand Year Calendar* page, then read the day number on the side at the end of the row).

4. Count the position found in Step 3 as the first double hour. Count clockwise through the six positions to the current double hour.
5. Look up the interpretation of this palace on page 44 - 45.

Hour Table

Hour	During Standard Time	During Daylight Savings Time
1	11 pm - 1 am	midnight to 2 am
2	1 - 3 am	2 - 4 am
3	3 - 5 am	4 - 6 am
4	5 - 7 am	6 - 8 am
5	7 - 9 am	8 - 10 am
6	9 - 11 am	10 - noon
7	11 am - 1 pm	noon to 2 pm
8	1 - 3 pm	2 - 4 pm
9	3 - 5 pm	4 - 6 pm
10	5 - 7 pm	6 - 8 pm
11	7 - 9 pm	8 - 10 pm
12	9 - 11 pm	10 - midnight

Note: for 11 pm to midnight during standard time, use the next day's date. For example, if it is 11:15 pm on February 12th, then count it as February 13th.

Example: August 6th, 2014, 8:30 am

- A. Start in Position One.
- B. August 6th is in the column that says 7th month at the top.
So we go to Position One.
- C. August 6th is the 11th day of the 7th month.
- D. Start where we left off in Position One and call that 1.
Count clockwise to the 11th position from there: Position Three.
- E. Start in Position Three and count for the hour.
- F. Whether it is Daylight Savings Time or not, 8:30 am is the 5th hour. Count 5 positions, with Position Three and call that 1, and end up in Position One.

This is the outcome:

Position Five is **Great Peace**

Read the interpretation on the next page and apply it to the situation.

Interpretation

1. Great Peace (大安 da an):

The person in question has not moved at this time. This position belongs to wood element and the east. Generally in planning matters, use 1, 5, and 7. This position belongs to the four limbs. Helpful people are found in the southwest. Avoid the east. Children, women and the six domestic animals are frightened.

In Great Peace, every activity prospers. Seek wealth in the southwest. Lost items are not far away. The house is secure and peaceful. The person you expect has not left yet. Illness is not serious. Military generals return home to the fields. Look for opportunities and push your luck.

2. Back and Forth (留連 liu lian):

The person you expect is not returning yet. This position belongs to water element and the north. Generally in planning matters, use 2, 8, and 10. This position belongs to the kidneys and stomach. Helpful people are found in the south. Avoid the north. Children wander the road as disembodied spirits.

With Back and Forth, activities are difficult to achieve. You have not adequately planned for your goals. Official activities are delayed. Those who have gone do not return from their journey yet. Lost items appear in the south. Hurry and ask for what you want and you will get results. But guard against gossip and disputes. Family members for the moment are so-so.

3. Hastening Happiness (速喜 su xi):

The expected person arrives shortly. This position belongs to fire element and the south. Generally in planning matters, use 3, 6, and 9. This position belongs to the heart and brain. Helpful people are found in the southwest. Avoid the south. Children, women, and animals are frightened.

With Hastening Happiness, happiness arrives. Seek wealth toward the south. Lost items are found between 11 am and 5 pm if you ask a passerby about it. Official activities have blessing and virtue. Sick people have no misfortune. Auspicious for the fields, house, and the six livestock. You receive news from someone far away.

4. Red Mouth (赤口 chi kou)

An inauspicious time for official activities. This position belongs to metal element and the west. Generally in planning matters, use 4, 7, and 10. This position belongs to the lungs and stomach. Helpful people are found in the east. Avoid the west. Children are bewildered young spirits.

Red Mouth governs quarrels and disputes. Be cautious about legal matters. Quickly go search for lost items. Travelers experience a fright. The six domestic animals give you trouble. The sick should go to the west. Furthermore, you must guard against being cursed. Fear catching epidemic diseases.

5. Small Auspiciousness (小吉 xiao ji)

The expected person comes in a happy time. This person belongs to wood element and all directions. Generally in planning matters, use 1, 5, and 7. This position belongs to the liver and intestines. Helpful people are found in the southwest. Avoid the east. Children, women and the six domestic animals are frightened.

Small Auspiciousness is most auspicious and prosperous. Your road is smooth. Spirits come announcing good news. Lost items are located in the southwest. Travelers promptly arrive. Relations with others are extremely strong. Everything is harmonious. A sick person should pray to heaven.

6. Empty and Lost (空亡 kong wang)

News you expect does not come at this time. This position belongs to earth element. Generally in planning matters, use 3, 6, and 9. This position belongs to the spleen and brain. Helpful people are found in the north. Watch out for the health of your children. Males feel pressure. The activities of females get no results.

Spirits are often unreasonable or perverse. Seeking wealth is without benefit. There is disaster for travelers. Lost items will not appear. Official activities bring punishment and damage. Sick people meet a dark ghost. To be secure and peaceful, get release from calamity by sacrifice and prayer.

Example: You are getting married. The limo driver is unable to pick up the bridal party because the tires blew out. You use Liu Ren to find out what is going on.

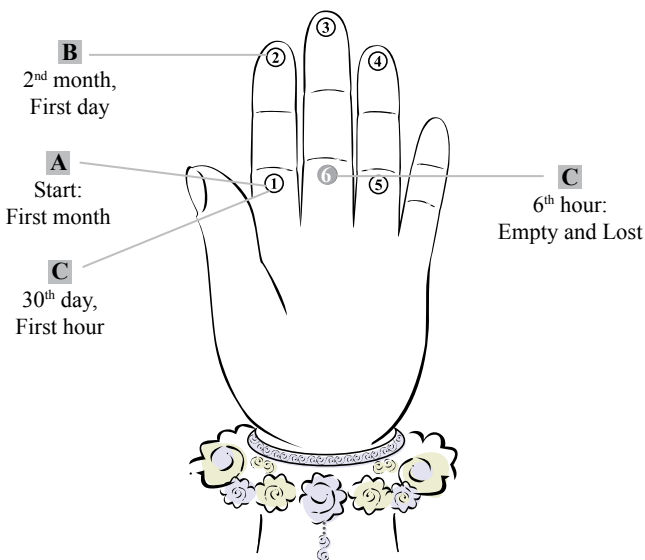
Today's time and date: March 30th, 2014, 10:30 am

- A. Start in Position One.
- B. March 30th is in the column that says 2nd month at the top.
So we go to Position Two.
March 30th is the 30th day of the 2nd month.
Start where we left off in Position Two and call that 1.
- C. Count clockwise to the 30th position from there: Position One.
Start in Position One and count for the hour.
It is 10:30 am, the 6th hour.
- D. Count 6 positions, with Position One as the beginning, and end up in Position Six.

This is the outcome:

Position Three is Empty and Lost

Read the text and apply it to the situation. Empty and Lost begins with “A new limo was sent within.” You wait calmly for twenty minutes and your ride arrives. The ride was upgraded to a hummer limo and comped the first 2 hours of service.





OMENS



In Chinese almanacs, there are often listings of predictions based on omens. We include a few below. Have fun with it and don't take it seriously.

Omens from the Twitch of an Eye

Time	Eye	This is an omen of:
11 pm - 1 am Zi	Left	Meeting a benefactor
	Right	Having a good meal
1 - 3 am Chou	Left	Having anxiety
	Right	Someone thinking about you
3 - 5 am Yin	Left	Someone coming from afar
	Right	A happy matter arriving
5 - 7 am Mao	Left	The coming of an important guest
	Right	Something peaceful, safe and auspicious
7 - 9 am Chen	Left	A guest coming from afar
	Right	Injury or harm
9 - 11 am Si	Left	Having a good meal
	Right	Something inauspicious
11 am - 1 pm Wu	Left	Having a good meal
	Right	An inauspicious matter
1 - 3 pm Wei	Left	A lucky star
	Right	Good luck, but small
3 - 5 pm Shen	Left	Money coming
	Right	Someone thinking of you romantically
5 - 7 pm You	Left	A guest coming
	Right	A guest arriving
7 - 9 pm Xu	Left	A guest arriving
	Right	A gathering or meeting
9 - 11 pm Hai	Left	A guest arriving
	Right	Gossip

Correct for *Daylight Savings Time*, if in use (subtract one hour from the current time).

Omens from Hiccoughs

Time	This is an omen of:
11 pm - 1 am Zi	A good meal and a happy dinner gathering
1 - 3 am Chou	Someone missing you; a guest coming to seek your help
3 - 5 am Yin	Someone missing you; a dining engagement
5 - 7 am Mao	Wealth and happiness; someone coming to ask about a matter
7 - 9 am Chen	A good meal; great good luck for everyone
9 - 11 am Si	A lucky person coming to seek wealth
11 am - 1 pm Wu	An important guest; someone wanting a dinner gathering
1 - 3 pm Wei	Someone wanting a meal; lucky activities
3 - 5 pm Shen	Nightmares; eating is not beneficial
5 - 7 pm You	Someone coming; someone asks about a matter
7 - 9 pm Xu	Someone missing you; a meeting brings benefit
9 - 11 pm Hai	Something frightens, but on the contrary, brings benefit

Correct for *Daylight Savings Time*, if in use (subtract one hour from the current time).

Love rules the
kingdom
without a sword

仁者無敵



Calligraphy by Larry Sang

THE YELLOW EMPEROR



THE YELLOW EMPEROR IN THE FOUR SEASONS



黃帝四季詩



There is a lifetime prediction commonly found in Chinese almanacs. Based on your season of birth, find your birth time.

The Yellow Emperor in the Four Seasons

Time of Birth		Season of Birth			
		Spring February 4 th to May 4 th	Summer May 5 th to August 6 th	Autumn August 7 th to November 6 th	Winter November 7 th to February 3 th
Zi	11p-1a	head	low abdomen	shoulders	low abdomen
Chou	1-3a	chest	hands	hands	knees
Yin	3-5a	feet	feet	knees	chest
Mao	5-7a	shoulders	shoulders	chest	shoulders
Chen	7-9a	knees	knees	feet	feet
Si	9-11a	hands	hands	hands	head
Wu	11a-1p	low abdomen	head	shoulders	hands
Wei	1-3p	hands	chest	chest	knees
Shen	3-5p	feet	feet	low abdomen	chest
You	5-7p	shoulders	shoulders	knees	shoulders
Xu	7-9p	knees	knees	feet	feet
Hai	9-11p	chest	chest	head	hands

Correct birth time for Daylight Saving Time, if used at the time of birth. If you were born in the Southern Hemisphere, switch the autumn and spring dates, as well as the summer and winter dates.

The Yellow Emperor in the Four Seasons

Born on the Yellow Emperor's Head means a lifetime of never having worries. Even petty people have riches and honor. Clothes and food naturally come around. Your position in society is elevated, and gentlemen are good at planning. Women go through life steadily and smoothly, marrying a talented and educated person.

Born on the Yellow Emperor's Hands means business capital is sufficient. Going out, you meet a benefactor. Inside the home, you have everything. Your early years are very steady and smooth. You accumulate many possessions. Wealth comes from every direction. When old, it is in your hands.

The Yellow Emperor in the Four Seasons

Born on the Yellow Emperor's Shoulders means a life of a million riches. You have wealth in your middle years. Children and grandchildren are plenty. Clothes and income at all times are good. In old age, you have fields in the village. Siblings are helpful. Your early life is bitter, but the later end is sweet.

Born on the Yellow Emperor's Chest means clothes and food are naturally ample. Experts in the pen and the sword are around you. There is music, song, and dance. Middle age brings good clothes and food. Later years are happy and prosperous. Joy, utmost honor, prosperity, and increased longevity add more blessings.

Born on the Yellow Emperor's Lower Abdomen, you were treasured by your parents. In middle age, clothes and food are good. When old you obtain gold. The family reputation is changing a lot. You are a noble person. Children and grandchildren must newly shine. Cultured and bright, they advance a lot.

Born on the Yellow Emperor's Knees means doing things is without benefit. In your early years, you toiled a lot, but did not lack clothes and food. Everyday, you travel on the road; you cannot avoid running back and forth. Old age is smooth, with honor and prosperity, but in middle age, hard work is extreme.

Born on the Yellow Emperor's Feet, practice moral teachings to avoid toil. A lifetime that is safe and sound, but unsuitable to reside in your ancestor's home. Women marry two husbands. Men have two wives. Search lonely mountain ranges. Leave your homeland to achieve good fortune.

FENG SHUI

A decorative flourish consisting of two horizontal yellow lines with a pink and green floral-like element in the center.

FENG SHUI



Makes the Universe Work for You



We live in a universe that is filled with different energies. Our planet rotates on its axis, creating cycles of day and night. The earth also revolves around the sun in yearly cycles and is subject to various gravitational and magnetic fields. Our solar system is moving through space and is also subject to other forces in the universe. These physical forces and many different time cycles affects us profoundly. The Chinese have spent centuries observing the effects with their environment. This is the science and art of Feng Shui (Chinese geomancy).

Feng Shui uses observation, repeatable calculations and methodologies, and is based on the study of the environment, both inside and out of the house. Feng Shui can help you determine the best home to live in, which colors can enhance your home, the best bed positions for deep sleep, and how to change your business or home into a center of power. Feng Shui can help improve your health, your relationships and your prosperity. It is based on a complex calculation and observation of the environment, rather than a metaphysical reading relying on inspiration or intuition.

The American Feng Shui Institute publishes the annual Chinese Astrology and Feng Shui Guide so that both the Feng Shui professional and layperson can benefit from the knowledge of the incoming energy cycles and their influences. With this knowledge, one can adjust their environment to make it as harmonious as possible for the current year.

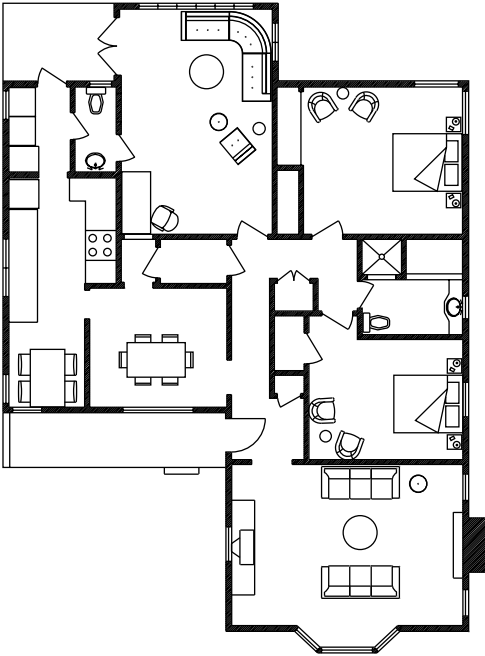
The following sections contain the energy patterns for the current year with an analysis and remedy for each of the eight directions. For the nonprofessional, there is a section on how to prepare your home for this reading. Please note that Feng Shui is a deep and complex science that requires many years to master. Preparing your home to receive the annual energy is one aspect that anyone can apply. A professional reading is recommended to anyone who wishes to receive the greatest benefits possible that Feng Shui can bring.

Preparing your home for a Feng Shui reading

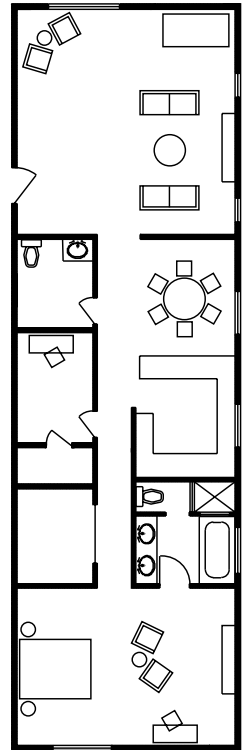
The Floor Plan

The first requirement for preparing your home for a Feng Shui annual reading is to create a proportional floor plan. This plan can be hand drawn or be the original building plans, as long as the plan is proportionally correct. It is not necessary to draw in all your furniture except perhaps noting your bed and desk. It is important that you indicate where all window and door openings are.

**Example A
Floor Plan**



**Example B
Floor Plan**

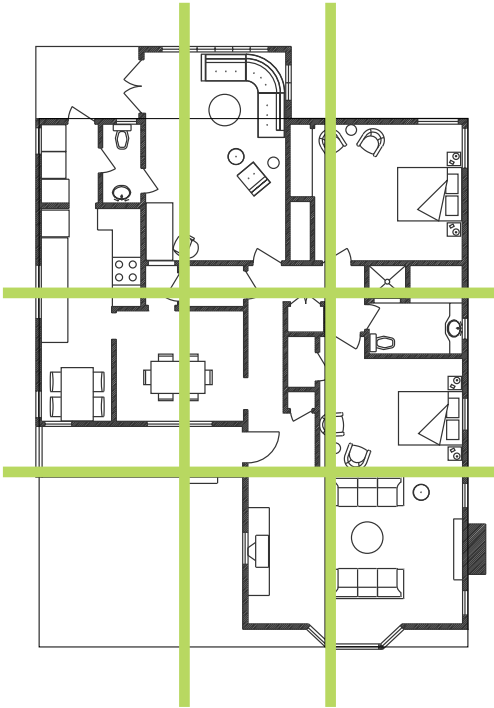


Preparing your home for a Feng Shui reading

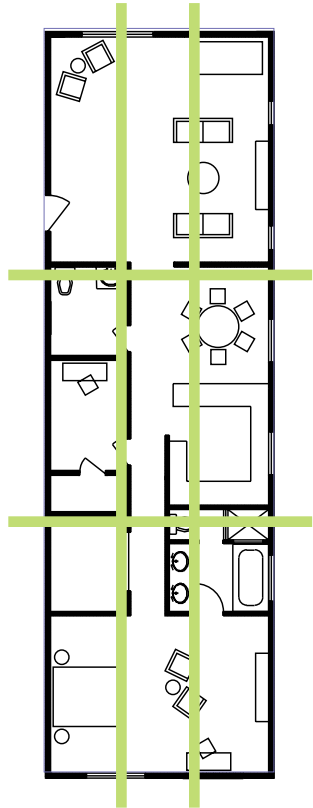
Gridding The Floor Plan

Once you have your floor plan drawn, you then overlay a 9 - square grid. This grid is proportional to the floor plan. If it were a long and narrow house, so would the grid be long and narrow. You want to divide the floor plan into equal thirds both top to bottom and left to right as shown below:

**Example A
with Grid**



**Example B
with Grid**



The Compass Reading

The next step is to determine the alignment of your house with the earth magnetic fields by taking a compass reading. It is very important to take an accurate reading and not guess the orientation based on the direction of the sun or a map.

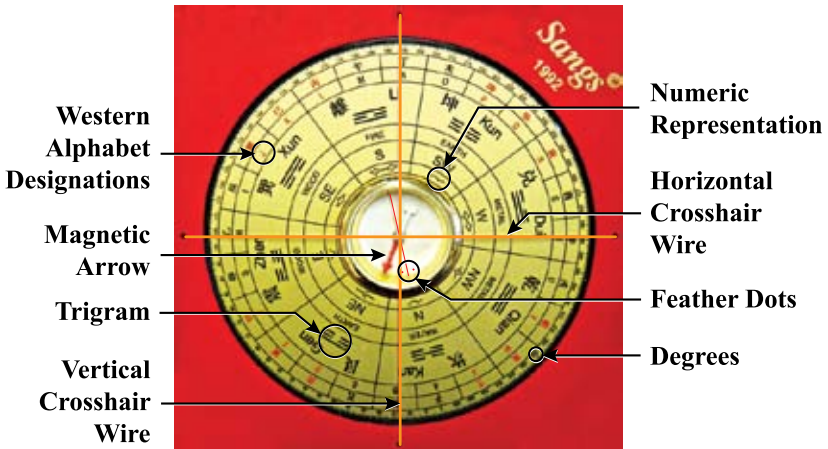
Why Do You Need To Use A Compass?

In Feng Shui, we look at the eight cardinal and inter-cardinal directions: East, Southeast, South, Southwest, West, Northwest, North, and Northeast when analyzing a home or building. Each of these directions hold unique significance to these building. If you do not use a compass to determine the correct orientation, you might completely misread your home. You cannot map the qi within the building without an exact orientation. It is similar to finding your way out of a forest without a compass. You have a high probability of getting lost. Without a compass, it simply is not Feng Shui.

A Compass vs A Luopan

You can use any compass if you do not have a Luopan. The Luopan is simply a Chinese compass that helps determine the sitting direction of a building. It also contains a wealth of information on its dial that is used for more advanced applications. In recent years, Master Larry Sang simplified the traditional Luopan specifically for training Western students. Although it looks simple compared to an original Luopan, it has all the tools you need to accurately analyze a building. An important fact to remember about a Luopan is that it points to the South. The following information and instructions apply to a Luopan, however, if you are using a Western compass these concepts are easy to adapt.

SANG'S LUOPAN



Parts of Sang's Luopan

The Magnetic Arrow - The arrowhead points South rather than North. Western compasses point North.

The Feather Dots - (The twin dots at the center of the rotating dial). Always adjust the rotating (gold) dial to align the twin dots with the feather end of the arrow.

The Numeric Representations - The innermost ring has a dot pattern that represents the Trigram's numbers. For example Kun has two dots and Qian has six dots.

Crosshair Alignments - The red crosshairs designate the facing and sitting directions. Once the arrow is steady and the feather end is aligned over the north twin dots, you can determine the sitting direction and the facing direction.

The Eight Trigrams - The Eight Trigrams are the basis for orientation in Feng Shui and are shown on the Luopan with their perspective elements, symbols, and directions.

Western Alphabet Designations - Each Trigram is divided into three equal parts. These parts are shown with both their Chinese symbols and using the Western Alphabet.

The Degrees - Outermost on the dial are the Western compass degree in Arabic numerals.

General Guidelines for using the Luopan:

To use the Luopan or compass correctly, remember the following guidelines:

1. Always stand straight and upright.
2. Do not wear metal jewelry or belt buckles that can skew the compass.
3. Avoid any electrical influences such as automobiles or electrical boxes.
4. Always stand parallel to the building.
5. Keep your feet square below you.
6. You can keep the Luopan in the lower box case to manage it better.

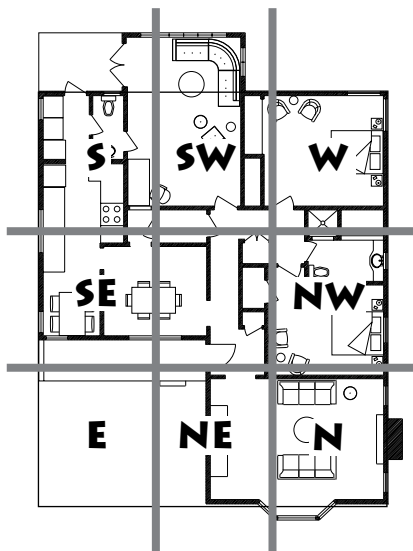


Taking a reading with the Luopan:

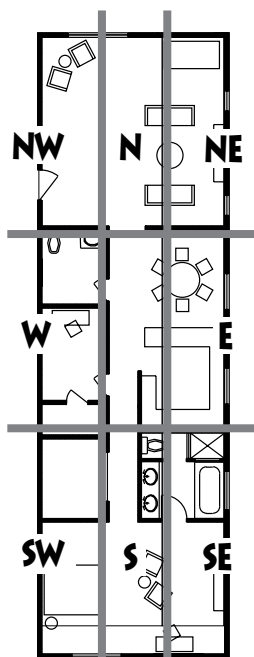
With the general guidelines for using a luopan in mind, now you are ready to take a reading to determine which wall or corner of your home is located closest to the North.

1. Take your reading outside, standing parallel to your home with your back to it. Stand straight and hold the Luopan at waist level. Wait until the arrow ceases to quiver.
2. Slowly turn the center (gold) dial so that the North/feather dots align with the feather of the arrow. If using a Western compass, turn the compass so that the needle's arrow end aligns with north (between $337.5^\circ - 22.5^\circ$).
3. Please take at least three separate readings from other positions. If you find that there is a discrepancy, take various readings at various locations until you are sure which one is correct. One direction should stand out as being correct.
4. Indicate on your floor plan which section is North. Fill in the other directions as illustrated. Please note that North can lie in a corner section.

Example A



Example B



DIRECTIONS TO AVOID FOR CONSTRUCTION 2015



The Three Sha and the Sui Po

The **Three Sha** are in the **Southwest, West and Northwest:**
Shen, You and Xu directions

The **Sui Po** or **Year Breaker** is in the **Northeast**
Chou direction

The **Tai Sui** is in the **Southwest:**
Wei direction.

Therefore, avoid using these directions:
Chou, Wei, Shen, You and Xu

Directions to Avoid

15° Direction	Degrees	45° Direction	Sang's Luopan Alpha Designation
Wei	202.5 - 217.5	SW	o
Shen	232.5 -307.5	SW	q
Geng		W	r
You		W	s
Xin		W	t
Xu		NW	u
Chou	22.5 -37.5	NE	c

What should we avoid in these directions?

- New construction sitting in these directions
- Major renovation to buildings sitting in these directions.
- Major renovation to this section of the house, regardless of the sitting direction.
- Burial of the deceased in these directions.
- Digging or breaking of earth in these directions. If digging cannot be avoided in any of these areas, then place a metal wind chime outside between the house and the digging site.
- In addition, Ox or Sheep born in the third, sixth, or twelfth month of the lunar calendar should avoid attending funerals or burials.

FENG SHUI



2015

Qi Pattern

SE Black	S Red	SW Purple
E White	 Jade	W Yellow
NE White	N White	NW Green

The Qi (energy) shift begins on
February 4th at 12:09pm

INTRODUCTION

While this diagram may look foreign to the beginner, it is essential information for the experienced Feng Shui practitioner. Each year the qi pattern brings different effects. Some of these effects are quite auspicious and favorable and some may be inauspicious and not so favorable.

The effects of the 2015 energy pattern are analyzed for you in the following pages. Each analysis contains suggested remedies or enhancements for each section. Remedies are recommended to reduce negative qi. Enhancements are recommended to increase beneficial qi. These remedies or enhancements consist of the five elements: wood, fire, earth, metal, and water.

To use a remedy or enhancement, it must be placed inside the house within that particular section. If more than one room exists within a section, then each room needs to have its own remedy or enhancement. Any exceptions will be noted.



FENG SHUI



2015

<p>SE</p> <p>2</p> <p>Black</p>	<p>S</p> <p>7</p> <p>Red</p>	<p>SW</p> <p>9</p> <p>Purple</p>
<p>E</p> <p>1</p> <p>White</p>	<p>Gossip <i>Lu Cun</i></p> <p>3</p> <p>Jade</p>	<p>W</p> <p>5</p> <p>Yellow</p>
<p>NE</p> <p>6</p> <p>White</p>	<p>N</p> <p>8</p> <p>White</p>	<p>NW</p> <p>4</p> <p>Green</p>

The Center Section

Center

Analysis

In 2015 the *3 Jade Lu Cun Star* visits the center. This star is beneficial for development, expansion, and sales promotion. But because *3 Jade Lu Cun* is a star of fighting, robbery, arguments, misunderstandings, and gossip, 2015 will not be a stable year. We will continue to experience fighting and clashes around the world, as in 2014.

The *3 Jade Lu Cun Star* corresponds to wood element and is a fighting star. We are currently in Period 8. This Period 8 is associated with the 8 White Zuo Fu Star. 8 White is Earth element. Because there is a domination relationship between 3 Jade Green (Wood) and 8 White (Earth) in the center, we can predict an elevated risk for earthquakes, landslides, sudden shocking explosions, global bombings, or terrorist attacks. There are also signs of a dangerous nature indicating that children can easily get hurt. Places like kindergartens, water parks, and amusement parks all should pay more attention. The most critical point of time will be between May 5th and June 5th.



FENG SHUI



2015

<p>SE</p> <p>2</p> <p>Black</p>	<p>S</p> <p>7</p> <p>Red</p>	<p>SW</p> <p>9</p> <p>Purple</p>
<p>E</p> <p>Fortunate <i>Tan Lang</i></p> <p>1</p> <p>White</p>	<p></p> <p>3</p> <p>Jade</p>	<p>W</p> <p>5</p> <p>Yellow</p>
<p>NE</p> <p>6</p> <p>White</p>	<p>N</p> <p>8</p> <p>White</p>	<p>NW</p> <p>4</p> <p>Green</p>

The East Section

East

Situation

Doors, bedrooms, or study rooms in the East Section.

Analysis

The *1 White Tan Lang Fortunate Star* is in the east section in 2015. This Fortunate Star brings wealth, fame, romance, and good negotiation skills. The 1 White Star is water element. The east section is the home of the 3 Jade Lu Cun Star, which is wood element. The combination of 3 wood and 1 water have a productive relationship, making this section good for sales promotion, business expansion, and development.

Benefits

Prosperity for flowers shops, nursery gardens, attorneys, or the sales profession.

Enhancement

Use water or indoor water plants to enhance your money luck or increase sales volume.



FENG SHUI



2015

<p>SE <i>Sickness</i> <i>Ju Men</i></p> <p>2</p> <p>Black</p>	<p>S</p> <p>7</p> <p>Red</p>	<p>SW</p> <p>9</p> <p>Purple</p>
<p>E</p> <p>1</p> <p>White</p>	<p>3</p> <p>Jade</p>	<p>W</p> <p>5</p> <p>Yellow</p>
<p>NE</p> <p>6</p> <p>White</p>	<p>N</p> <p>8</p> <p>White</p>	<p>NW</p> <p>4</p> <p>Green</p>

The Southeast Section

Southeast

Situation

Doors, bedrooms, or study rooms in the Southeast Section.

Analysis

The 2 *Black Ju Men Star* is in the southeast this year. The 2 Black Ju Men Star is earth element; it represents sickness, gossip, and misunderstandings. Southeast is the home of 4 Green Wen Qu Star, and its element is wood. Wood dominates earth, creating disharmony in the family, especially for housewives. Therefore, when spending a lot of time in this section, be cautious of health problems or sex diseases.

Caution

Inharmonious relationships between husband and wife.
Arguments and misunderstandings are easily aroused.

Remedy

Use a metal container filled with water to reduce the negative energy of domination in this section.

After the Remedy

Relationships between husband and wife become more harmonious.

Strong for Peach Blossom.

Easy to encounter extramarital affairs.



Feng Shui

FENG SHUI



2015

<p>SE</p> <p>2</p> <p>Black</p>	<p>S</p> <p>Fighting <i>Po Jun</i></p> <p>7</p> <p>Red</p>	<p>SW</p> <p>9</p> <p>Purple</p>
<p>E</p> <p>1</p> <p>White</p>	<p>3</p> <p>Jade</p>	<p>W</p> <p>5</p> <p>Yellow</p>
<p>NE</p> <p>6</p> <p>White</p>	<p>N</p> <p>8</p> <p>White</p>	<p>NW</p> <p>4</p> <p>Green</p>

The South Section

South

Situation

Doors, bedrooms, or study rooms in the South Section.

Analysis

This year the **7 Red Po Jun Fighting Star** is in the south. 7 Red Po Jun is a competitive and fighting star. The 7 Red Star's element is metal. The south is home to the 9 Purple Star which brings promotion and celebrations. The 9 Purple Star is fire element. These two stars, metal and fire, create a domination relationship and give this section an elevated potential for fire-related disasters. It is important to note that the evil influences from the combination of the 7 Star and 9 Star will be at their height during the second Chinese calendar month (March 6th through April 4th) and the twelfth month (January 6th through Feb., 3rd 2016). Exercise more caution during these times.

Caution

Fire related disasters such as fires, burns, or gunshot injuries.
Not beneficial for teenage girls.

Remedy

To reduce the evil influence of strong fire, use the earth element in the south section. You can displace beautiful pottery or porcelain, preferably in an earth tone. For a building or house sitting south and facing north, you can put a large decorative rock at the back yard.

The logo features two stylized Chinese characters, '風' (Wind) and '水' (Water), arranged vertically. Below the characters, the words 'Feng Shui' are written in a cursive, calligraphic font.

Feng Shui

FENG SHUI



2015

<p>SE</p> <p>2</p> <p>Black</p>	<p>S</p> <p>7</p> <p>Red</p>	<p>SW Celebration You Bi</p> <p>9</p> <p>Purple</p>
<p>E</p> <p>1</p> <p>White</p>	<p>3</p> <p>Jade</p>	<p>W</p> <p>5</p> <p>Yellow</p>
<p>NE</p> <p>6</p> <p>White</p>	<p>N</p> <p>8</p> <p>White</p>	<p>NW</p> <p>4</p> <p>Green</p>

The Southwest Section

Southwest

Situation

Doors, bedrooms, or study rooms in the Southwest Section.

Analysis

The *9 Purple You Bi Celebration Star* visits the southwest in 2015. The 9 Purple Star brings wealth, fame, romance, and good negotiation skills. The 9 Purple is fire element. The southwest section is the location of 2 Black Ju Men Star. The 2 Black Star is earth. Fire produces Earth which creates a harmonious relationship, especially for housewives or females in charge. However, the Tai Sui annual star also falls in the southwest, so this section is not beneficial for disturbing the earth with digging or construction.

Benefits

Prosperous for fire related businesses, hospitals, or sales.
Strong for Peach Blossom, lucky for a female to get married or trying to get pregnant.

Caution

Unfavorable for construction.



FENG SHUI



2015

<p>SE</p> <p>2</p> <p>Black</p>	<p>S</p> <p>7</p> <p>Red</p>	<p>SW</p> <p>9</p> <p>Purple</p>
<p>E</p> <p>1</p> <p>White</p>	<p>3</p> <p>Jade</p>	<p>W</p> <p>Disaster <i>Lian Zhen</i></p> <p>5</p> <p>Yellow</p>
<p>NE</p> <p>6</p> <p>White</p>	<p>N</p> <p>8</p> <p>White</p>	<p>NW</p> <p>4</p> <p>Green</p>

The West Section

West

Situation

Doors, bedrooms, or study rooms in the West Section.

Analysis

The *5 Yellow Lian Zhen Disaster Star* falls in the west this year. This inauspicious Star brings the potential for delays, obstacles, fires, lawsuits, sickness and casualties. The 5 Yellow Star is earth element. West is the home of the 7 Red Po Jun Star, which is metal element. An entrance or bedroom falling in this section brings the potential to develop tumors if no remedy is applied. Even so, it is advised to avoid spending a lot of time in this area. Moreover, this year with other inauspicious stars in the West, it is not advisable to do construction or ground breaking here as misfortune from sickness is easily aroused. It is also critical to avoid breaking ground in the west, since it is easy to arouse misfortune.

Caution

If you violate the above, you may encounter obstacles, pressure, delays, sickness, fighting, robbery, accidents, or injury from sharp metal objects.

Remedy

To reduce the above potential negative effects, use a metal container filled with water; this reduces the negative earth and metal energy.



Feng Shui

FENG SHUI



2015

<p>SE</p> <p>2</p> <p>Black</p>	<p>S</p> <p>7</p> <p>Red</p>	<p>SW</p> <p>9</p> <p>Purple</p>
<p>E</p> <p>1</p> <p>White</p>	<p>3</p> <p>Jade</p>	<p>W</p> <p>5</p> <p>Yellow</p>
<p>NE</p> <p>6</p> <p>White</p>	<p>N</p> <p>8</p> <p>White</p>	<p>NW Literary Wen Chu</p> <p>4</p> <p>Green</p>

The Northwest Section

Northwest

Situation

Doors, bedrooms, or study rooms in the Northwest Section.

Analysis

The *4 Green Wen Qu (Literary) Star* visits the northwest this year. The Literary star represents creativity, academic achievement, and Peach Blossom. The 4 Green Star's element is wood. Northwest is the home of the 6 White Fortune Star which is metal element. The 4 Green (wood) and the 6 White (metal) have a domination relationship. Therefore, if you spend a lot of time in this section, be on guard for your health. The Sui Sha is also in the west, so refrain from ground breaking in this section to prevent misfortune from occurring.

Caution

Not beneficial for literature, scholars, writers, actors, and persons working in entertainment-related industries. Love relationships are short-lived.

Remedy

Use water to remedy the negative influence. A fountain or aquarium in the northwest will help to change poison into medicine.

After the Remedy

Beneficial for literature, scholars, writers, actors, and persons working in entertainment-related industries. Favorable energy for people in love.



FENG SHUI



2015

<p>SE</p> <p>2</p> <p>Black</p>	<p>S</p> <p>7</p> <p>Red</p>	<p>SW</p> <p>9</p> <p>Purple</p>
<p>E</p> <p>1</p> <p>White</p>	<p>3</p> <p>Jade</p>	<p>W</p> <p>5</p> <p>Yellow</p>
<p>NE</p> <p>6</p> <p>White</p>	<p>N</p> <p>Wealth Zuo Fu</p> <p>8</p> <p>White</p>	<p>NW</p> <p>4</p> <p>Green</p>

The North Section

North

Situation

Doors, bedrooms, or study rooms in the North Section.

Analysis

The *8 White Zuo Fu Wealth Star* is in the north this year. The 8 White Star is earth element and is a Wealth Star. The north is the home of 1 White Fortune Star which is water element. Though 8 White (earth element) and 1 White (water element) have a domination relationship, the combination of these two auspicious stars still brings this section good potential for fame or receiving honor, wealth, and romance. However, there is an inauspicious Wu Dou star in the north section, so playing safe should be the policy. Avoid overworking and stay away from liquor to protect your health. Do not do act as a guarantor for others.

Caution

Exercise caution to avoid any big losses due to hasty emotional decisions.

Trust no one to sign legal documents on your behalf.

Be careful of kidney or blood related problems.



Feng Shui

FENG SHUI



2015

<p>SE</p> <p>2</p> <p>Black</p>	<p>S</p> <p>7</p> <p>Red</p>	<p>SW</p> <p>9</p> <p>Purple</p>
<p>E</p> <p>1</p> <p>White</p>	<p>3</p> <p>Jade</p>	<p>W</p> <p>5</p> <p>Yellow</p>
<p>NE Fortunate Wu Qu</p> <p>6</p> <p>White</p>	<p>N</p> <p>8</p> <p>White</p>	<p>NW</p> <p>4</p> <p>Green</p>

The Northeast Section

Northeast

Situation

Doors, bedrooms, or study rooms in the Northeast Section.

Analysis

The *6 White Wu Qu Fortune Star* visits the northeast in 2015. The 6 White Fortune Star is a star of authority and power but also brings wealth. The 6 White Star's element is metal. The northeast belongs to the 8 White Zuo Fu Money Star which brings fame and wealth. The 8 White Star is earth. There are other auspicious annual stars in harmonious relationship with these two so it makes the northeast section greatly beneficial for politicians, leaders, and land developers or real estate related businesses. However, there is an inauspicious Sui Po star in the northeast, so it is not advisable for construction or ground breaking to take place here.

Benefits

Make use of this favorable energy to strengthen your leadership. Beneficial for development and expansion.

Caution

Refrain from ground breaking or construction in this section to prevent misfortune from occurring.



The best work
is often accomplished
in adversity



Calligraphy by Larry Sang

DAY SELECTION



DAY SELECTION



Introduction to Day Selection

Day Selection has been used for a long time in China. Every year, almanacs would be published giving the best days for important activities, as well as days to avoid. It is thought that a positive outcome is more likely when an activity is begun on an auspicious day. In English, we talk about getting things off to a good start, but have no particular methodology to do this.

There are three aspects to selecting a good day: picking a day that is good for the activity, avoiding a day that is bad for the activity, and picking a day that is not bad for the person(s) involved. In the calendar pages that follow, each day will list two or three activities that are auspicious or inauspicious on that day. If you wanted to pick a date to get married, you would first look for the days that were considered good for weddings. In addition, you need to check the birth information of the bride and groom. If the bride is a Rabbit and the groom is a Rat, then you also need to avoid any days that say Bad for Rat or Bad for Rabbit, even if they are good for weddings in general.

In addition, there are some days that are not good for any important activity. Usually this is because the energy of heaven and earth is too strong or inharmonious on those days.

Day Selection is used for the first day of an activity. It does not affect a continued activity. For example, you should begin construction on a day that is good for ground breaking, but it is not a problem if the construction is continued through a day that is bad for ground breaking. The construction need not be stopped.

On the next page are definitions of the various activities included in Master Sang's Day Selection Calendar.

CALENDAR TERMINOLOGY KEY

Animals:

Generally a bad day for a person born in the year of the animal listed. Even if an activity is listed as beneficial for that day, it will usually not be beneficial for that animal.

***Begin Mission:**

Beginning a new position, mission, or assignment.

Burial:

Burial.

***Business:**

Trade or business.

***Buy Property:**

Purchasing real estate.

***Construction:**

Begin work on buildings, roads, etc.

***Contracts:**

Signing or entering into a contract, pact, or agreement.

Don't Do Important Things:

A bad day for most activities.

Fix House:

Repairing the inside or outside of the house. Also for installing major appliances, such as the stove or oven.

Funeral:

Funerals.

***Grand Opening:**

Opening a new business, restaurant, etc. Opening ceremonies for a new event.

Ground Breaking:

Beginning construction or disturbing the earth.

Ground Digging:

Unearth or excavate the earth with a shovel or spade to remove material or plants.

Hunting:

To chase wild animals for the purpose of catching or killing

Lawsuit:

Filing a lawsuit or going to court.

***Moving:**

Moving or changing residences.

Planting:

Gardening or planting.

Prayer:

Praying for blessings or happiness.

School:

Admissions into a new school.

Surgery:

Medical treatment or operation.

***Travel:**

Going out or beginning a trip.

***Wedding:**

Marriage ceremonies or becoming engaged to be married.

Worship:

Rituals, rites, ceremonies, offering sacrifices, or honoring ancestors or the dead.

Most Activities:

Includes all activities marked (*)

S	M	T	W	T	F	S
				1	2	3
4	5	6	7	8	9	10
11	12	13	14	15	16	17
18	19	20	21	22	23	24
25	26	27	28	29	30	31

January 2015

unfavorable for:

Thu	Good for: most activities Bad for: <i>planting, fix house</i>	Sheep
1		
Fri	Good for: grand opening, contracts, business Bad for: <i>ground breaking, ground digging</i>	Monkey
2		
Sat	Good for: worship, prayer Bad for: <i>most activities</i>	Rooster
3		
Sun	Good for: worship, prayer Bad for: <i>business, contracts</i>	Dog
4		
Mon	Good for: worship Bad for: <i>most activities</i>	Pig
5		
Tue	Good for: worship, prayer Bad for: <i>most activities</i>	Rat
6		
Wed	🚫 DON'T DO IMPORTANT THINGS 🚫	Ox
7		
Thu	Good for: most activities Bad for: <i>ground breaking, ground digging</i>	Tiger
8		
Fri	Good for: wedding, grand opening, contracts Bad for: <i>funeral, ground digging</i>	Rabbit
9		
Sat	Good for: worship, prayer Bad for: <i>most activities</i>	Dragon
10		
Sun	Good for: worship, prayer, planting Bad for: <i>most activities</i>	Snake
11		
Mon	🚫 DON'T DO IMPORTANT THINGS 🚫	Horse
12		
Tue	Good for: worship, prayer Bad for: <i>most activities</i>	Sheep
13		
Wed	Good for: most activities Bad for: <i>funeral, ground digging</i>	Monkey
14		
Thu	Good for: worship, prayer, planting Bad for: <i>most activities</i>	Rooster
15		

Fri 16	☞ DON'T DO IMPORTANT THINGS ☞	<i>Dog</i>
Sat 17	Good for: most activities <i>Bad for:</i> funeral, ground digging	<i>Pig</i>
Sun 18	Good for: worship, prayer <i>Bad for:</i> most activities	<i>Rat</i>
Mon 19	☞ DON'T DO IMPORTANT THINGS ☞	<i>Ox</i>
Tue 20	Good for: worship, prayer, planting <i>Bad for:</i> business, buy property	<i>Tiger</i>
Wed 21	Good for: most activities <i>Bad for:</i> funeral, burial	<i>Rabbit</i>
Thu 22	Good for: worship, prayer <i>Bad for:</i> most activities	<i>Dragon</i>
Fri 23	Good for: worship, school, planting <i>Bad for:</i> most activities	<i>Snake</i>
Sat 24	☞ DON'T DO IMPORTANT THINGS ☞	<i>Horse</i>
Sun 25	Good for: most activities <i>Bad for:</i> burial, ground digging	<i>Sheep</i>
Mon 26	Good for: worship, prayer <i>Bad for:</i> most activities	<i>Monkey</i>
Tue 27	Good for: worship, prayer, planting <i>Bad for:</i> most activities	<i>Rooster</i>
Wed 28	Good for: worship, prayer <i>Bad for:</i> most activities	<i>Dog</i>
Thu 29	Good for: begin mission, contracts, planting <i>Bad for:</i> fix house, moving, lawsuit	<i>Pig</i>
Fri 30	Good for: worship, prayer <i>Bad for:</i> most activities	<i>Rat</i>
Sat 31	☞ DON'T DO IMPORTANT THINGS ☞	<i>Ox</i>

S	M	T	W	T	F	S
1	2	3	4	5	6	7
8	9	10	11	12	13	14
15	16	17	18	19	20	21
22	23	24	25	26	27	28

February 2015

unfavorable for:

Sun 1	Good for: contract, business, buy property <i>Bad for:</i> hunting, surgery	Tiger
Mon 2	Good for: most activities <i>Bad for:</i> funeral, ground digging	Rabbit
Tue 3	Good for: burial, funeral <i>Bad for:</i> most activities	Dragon
Wed 4	Good for: wedding, grand opening, business <i>Bad for:</i> burial, funeral	Snake
Thu 5	Good for: most activities <i>Bad for:</i> funeral, ground digging	Horse
Fri 6	🚫 DON'T DO IMPORTANT THINGS 🚫	Sheep
Sat 7	Good for: contract, business, buy property <i>Bad for:</i> moving, travel, fix house	Monkey
Sun 8	Good for: most activities <i>Bad for:</i> burial, funeral	Rooster
Mon 9	Good for: wedding, contract, grand opening <i>Bad for:</i> hunting, surgery	Dog
Tue 10	Good for: worship, prayer <i>Bad for:</i> burial, funeral	Pig
Wed 11	Good for: most activities <i>Bad for:</i> funeral, lawsuit	Rat
Thu 12	Good for: burial, ground digging <i>Bad for:</i> wedding, contract, grand opening	Ox
Fri 13	🚫 DON'T DO IMPORTANT THINGS 🚫	Tiger
Sat 14	Good for: worship, prayer, planting <i>Bad for:</i> most activities	Rabbit

Sun 15	Good for: most activities <i>Bad for:</i> hunting, surgery	Dragon
Mon 16	Good for: worship, prayer <i>Bad for:</i> contract, business, buy property	Snake
Tue 17	Good for: begin mission, school, planting <i>Bad for:</i> burial, funeral	Horse
Wed 18	☹ DON'T DO IMPORTANT THINGS ☹	Sheep
Thu 19	Good for: most activities <i>Bad for:</i> burial, funeral	Monkey
Fri 20	Good for: wedding, grand opening, business <i>Bad for:</i> construction, fix house	Rooster
Sat 21	Good for: worship, prayer <i>Bad for:</i> most activities	Dog
Sun 22	☹ DON'T DO IMPORTANT THINGS ☹	Pig
Mon 23	Good for: most activities <i>Bad for:</i> burial, funeral	Rat
Tue 24	Good for: most activities <i>Bad for:</i> burial, funeral, ground digging	Ox
Wed 25	☹ DON'T DO IMPORTANT THINGS ☹	Tiger
Thu 26	Good for: worship, prayer <i>Bad for:</i> house cleaning, moving, travel	Rabbit
Fri 27	Good for: worship, prayer, planting <i>Bad for:</i> most activities	Dragon
Sat 28	Good for: contract, business, buy property <i>Bad for:</i> hunting, surgery	Snake

S	M	T	W	T	F	S
1	2	3	4	5	6	7
8	9	10	11	12	13	14
15	16	17	18	19	20	21
22	23	24	25	26	27	28
29	30	31				

March 2015

unfavorable for:

Sun 1	Good for: most activities <i>Bad for:</i> burial, funeral	Horse
Mon 2	⊖ DON'T DO IMPORTANT THINGS ⊖	Sheep
Tue 3	Good for: wedding, grand opening, business <i>Bad for:</i> moving, travel, fix house	Monkey
Wed 4	Good for: most activities <i>Bad for:</i> burial, ground digging	Rooster
Thu 5	Good for: worship, prayer <i>Bad for:</i> wedding, contract, grand opening	Dog
Fri 6	Good for: grand opening, begin mission <i>Bad for:</i> burial, funeral	Pig
Sat 7	Good for: house cleaning, moving, travel <i>Bad for:</i> contract, business, buy property	Rat
Sun 8	Good for: most activities <i>Bad for:</i> funeral, lawsuit	Ox
Mon 9	Good for: begin mission, school, planting <i>Bad for:</i> construction, fix house	Tiger
Tue 10	⊖ DON'T DO IMPORTANT THINGS ⊖	Rabbit
Wed 11	Good for: construction, fix house <i>Bad for:</i> most activities	Dragon
Thu 12	Good for: most activities <i>Bad for:</i> funeral, ground digging	Snake
Fri 13	Good for: moving, travel <i>Bad for:</i> contract, business, buy property	Horse
Sat 14	⊖ DON'T DO IMPORTANT THINGS ⊖	Sheep
Sun 15	Good for: contract, business, buy property <i>Bad for:</i> grand opening, begin mission	Monkey

Mon 16	Good for: begin mission, school, planting <i>Bad for:</i> construction, fix house	Rooster
Tue 17	Good for: worship, prayer <i>Bad for:</i> wedding, grand opening, business	Dog
Wed 18	Good for: grand opening, begin mission <i>Bad for:</i> moving, travel, fix house	Pig
Thu 19	Good for: worship, prayer <i>Bad for:</i> most activities	Rat
Fri 20	☹ DON'T DO IMPORTANT THINGS ☹	Ox
Sat 21	Good for: worship, prayer <i>Bad for:</i> most activities	Tiger
Sun 22	☹ DON'T DO IMPORTANT THINGS ☹	Rabbit
Mon 23	Good for: contract, business, buy property <i>Bad for:</i> burial, ground digging	Dragon
Tue 24	Good for: begin mission, school <i>Bad for:</i> hunting, surgery	Snake
Wed 25	Good for: worship, prayer <i>Bad for:</i> most activities	Horse
Thu 26	☹ DON'T DO IMPORTANT THINGS ☹	Sheep
Fri 27	Good for: contract, business, buy property <i>Bad for:</i> moving, travel, fix house	Monkey
Sat 28	Good for: contract, business, buy property <i>Bad for:</i> funeral, lawsuit	Rooster
Sun 29	Good for: wedding, grand opening, business <i>Bad for:</i> burial, funeral	Dog
Mon 30	Good for: contract, business, buy property <i>Bad for:</i> burial, ground digging	Pig
Tue 31	Good for: worship, prayer <i>Bad for:</i> most activities	Rat

S	M	T	W	T	F	S
		1	2	3	4	
5	6	7	8	9	10	11
12	13	14	15	16	17	18
19	20	21	22	23	24	25
26	27	28	29	30		

April 2015

unfavorable for:

Wed 1	Good for: most activities <i>Bad for:</i> burial, funeral	Ox
Thu 2	Good for: worship, prayer <i>Bad for:</i> wedding, begin mission	Tiger
Fri 3	🚫 DON'T DO IMPORTANT THINGS 🚫	Rabbit
Sat 4	Good for: worship, prayer <i>Bad for:</i> grand opening, begin mission	Dragon
Sun 5	Good for: worship, prayer <i>Bad for:</i> hunting, surgery	Snake
Mon 6	Good for: wedding, contract, grand opening <i>Bad for:</i> burial, ground digging	Horse
Tue 7	🚫 DON'T DO IMPORTANT THINGS 🚫	Sheep
Wed 8	Good for: most activities <i>Bad for:</i> burial, ground digging	Monkey
Thu 9	Good for: worship, prayer <i>Bad for:</i> most activities	Rooster
Fri 10	Good for: worship, prayer <i>Bad for:</i> moving, travel, fix house	Dog
Sat 11	Good for: most activities <i>Bad for:</i> burial, ground digging	Pig
Sun 12	Good for: contract, business, buy property <i>Bad for:</i> moving, travel, fix house	Rat
Mon 13	Good for: construction, fix house <i>Bad for:</i> travel, fix house	Ox
Tue 14	Good for: worship, prayer <i>Bad for:</i> hunting, surgery	Tiger
Wed 15	Good for: burial, funeral <i>Bad for:</i> contract, business, buy property	Rabbit

Thu 16	☹ DON'T DO IMPORTANT THINGS ☹	Dragon
Fri 17	Good for: worship, prayer Bad for: most activities	Snake
Sat 18	Good for: most activities Bad for: burial, ground digging	Horse
Sun 19	☹ DON'T DO IMPORTANT THINGS ☹	Sheep
Mon 20	Good for: most activities Bad for: funeral, lawsuit	Monkey
Tue 21	Good for: worship, prayer Bad for: grand opening, begin mission	Rooster
Wed 22	Good for: fix house Bad for: contract, business, buy property	Dog
Thu 23	☹ DON'T DO IMPORTANT THINGS ☹	Pig
Fri 24	Good for: worship, prayer Bad for: most activities	Rat
Sat 25	Good for: construction, fix house Bad for: hunting, surgery	Ox
Sun 26	Good for: worship, prayer Bad for: grand opening, begin mission	Tiger
Mon 27	Good for: worship, prayer Bad for: funeral, lawsuit	Rabbit
Tue 28	☹ DON'T DO IMPORTANT THINGS ☹	Dragon
Wed 29	Good for: house cleaning, fix house Bad for: contract, business	Snake
Thu 30	Good for: most activities Bad for: burial, ground digging	4 Horse

S	M	T	W	T	F	S
				1	2	
3	4	5	6	7	8	9
10	11	12	13	14	15	16
17	18	19	20	21	22	23
24	25	26	27	28	29	30
31						

May 2015

unfavorable for:

Fri 1	⊖ DON'T DO IMPORTANT THINGS ⊖	<i>Sheep</i>
Sat 2	Good for: most activities <i>Bad for:</i> hunting, surgery	<i>Monkey</i>
Sun 3	Good for: worship, prayer <i>Bad for:</i> contract, business	<i>Rooster</i>
Mon 4	Good for: worship, prayer <i>Bad for:</i> grand opening, begin mission	<i>Dog</i>
Tue 5	⊖ DON'T DO IMPORTANT THINGS ⊖	<i>Pig</i>
Wed 6	Good for: house cleaning, moving, travel <i>Bad for:</i> burial, funeral	<i>Rat</i>
Thu 7	Good for: worship, prayer <i>Bad for:</i> most activities	<i>Ox</i>
Fri 8	Good for: worship, prayer <i>Bad for:</i> grand opening, begin mission	<i>Tiger</i>
Sat 9	Good for: most activities <i>Bad for:</i> funeral, lawsuit	<i>Rabbit</i>
Sun 10	Good for: worship, prayer <i>Bad for:</i> contract, business	<i>Dragon</i>
Mon 11	⊖ DON'T DO IMPORTANT THINGS ⊖	<i>Snake</i>
Tue 12	Good for: worship, prayer <i>Bad for:</i> moving, travel	<i>Horse</i>
Wed 13	⊖ DON'T DO IMPORTANT THINGS ⊖	<i>Sheep</i>
Thu 14	Good for: wedding, contract, grand opening <i>Bad for:</i> burial, funeral	<i>Monkey</i>
Fri 15	Good for: most activities <i>Bad for:</i> burial, ground digging	<i>Rooster</i>

Sat 16	Good for: house cleaning, fix house <i>Bad for:</i> moving, travel	Dog
Sun 17	Good for: school, planting <i>Bad for:</i> funeral, lawsuit	Pig
Mon 18	Good for: most activities <i>Bad for:</i> funeral, lawsuit	Rat
Tue 19	Good for: worship, prayer <i>Bad for:</i> most activities	Ox
Wed 20	Good for: most activities <i>Bad for:</i> ground digging, burial	Tiger
Thu 21	Good for: most activities <i>Bad for:</i> funeral, lawsuit	Rabbit
Fri 22	Good for: wedding, contract, grand opening <i>Bad for:</i> construction, fix house	Dragon
Sat 23	🚫 DON'T DO IMPORTANT THINGS 🚫	Snake
Sun 24	Good for: most activities <i>Bad for:</i> hunting, surgery	Horse
Mon 25	🚫 DON'T DO IMPORTANT THINGS 🚫	Sheep
Tue 26	Good for: construction, fix house <i>Bad for:</i> grand opening, begin mission	Monkey
Wed 27	Good for: worship, prayer <i>Bad for:</i> funeral, lawsuit	Rooster
Thu 28	Good for: house cleaning, fix house <i>Bad for:</i> moving, travel	Dog
Fri 29	Good for: most activities <i>Bad for:</i> burial, ground digging	Pig
Sat 30	Good for: worship, prayer <i>Bad for:</i> contract, business	Rat
Sun 31	Good for: worship, prayer <i>Bad for:</i> wedding, grand opening	Ox

S	M	T	W	T	F	S
	1	2	3	4	5	6
7	8	9	10	11	12	13
14	15	16	17	18	19	20
21	22	23	24	25	26	27
28	29	30				

June 2015

unfavorable for:

Mon 1	Good for: worship, prayer <i>Bad for:</i> construction, fix house	Tiger
Tue 2	Good for: most activities <i>Bad for:</i> burial, ground digging	Rabbit
Wed 3	Good for: wedding, grand opening, business <i>Bad for:</i> moving, travel	Dragon
Thu 4	🚫 DON'T DO IMPORTANT THINGS 🚫	Snake
Fri 5	Good for: worship, prayer <i>Bad for:</i> wedding, grand opening	Horse
Sat 6	🚫 DON'T DO IMPORTANT THINGS 🚫	Sheep
Sun 7	Good for: most activities <i>Bad for:</i> burial, funeral	Monkey
Mon 8	Good for: worship, prayer <i>Bad for:</i> moving, travel	Rooster
Tue 9	Good for: most activities <i>Bad for:</i> construction, fix house	Dog
Wed 10	Good for: construction, fix house <i>Bad for:</i> contract, business	Pig
Thu 11	Good for: worship, prayer <i>Bad for:</i> begin mission, school	Rat
Fri 12	Good for: moving, travel, fix house <i>Bad for:</i> funeral, lawsuit	Ox
Sat 13	Good for: most activities <i>Bad for:</i> burial, ground digging	Tiger
Sun 14	Good for: house cleaning, fix house <i>Bad for:</i> moving, travel	Rabbit
Mon 15	Good for: contract, business <i>Bad for:</i> moving, fix house	Dragon

Tue 16	Good for: worship, prayer <i>Bad for:</i> contract, business	Snake
Wed 17	🚫 DON'T DO IMPORTANT THINGS 🚫	Horse
Thu 18	🚫 DON'T DO IMPORTANT THINGS 🚫	Sheep
Fri 19	Good for: most activities <i>Bad for:</i> hunting, surgery	Monkey
Sat 20	Good for: worship, prayer <i>Bad for:</i> moving, travel	Rooster
Sun 21	🚫 DON'T DO IMPORTANT THINGS 🚫	Dog
Mon 22	🚫 DON'T DO IMPORTANT THINGS 🚫	Pig
Tue 23	Good for: house cleaning, fix house <i>Bad for:</i> contract, business	Rat
Wed 24	Good for: most activities <i>Bad for:</i> funeral, lawsuit	Ox
Thu 25	Good for: moving, travel, begin mission <i>Bad for:</i> construction, fix house	Tiger
Fri 26	Good for: worship, prayer <i>Bad for:</i> most activities	Rabbit
Sat 27	Good for: most activities <i>Bad for:</i> funeral, lawsuit	Dragon
Sun 28	Good for: house cleaning, fix house <i>Bad for:</i> begin mission, school	Snake
Mon 29	🚫 DON'T DO IMPORTANT THINGS 🚫	Horse
Tue 30	🚫 DON'T DO IMPORTANT THINGS 🚫	Sheep

6

S	M	T	W	T	F	S
		1	2	3	4	
5	6	7	8	9	10	11
12	13	14	15	16	17	18
19	20	21	22	23	24	25
26	27	28	29	30	31	

July 2015

unfavorable for:

Wed 1	Good for: wedding, grand opening, business <i>Bad for:</i> moving, fix house	Monkey
Thu 2	Good for: worship, prayer <i>Bad for:</i> contract, business	Rooster
Fri 3	Good for: school, planting <i>Bad for:</i> house cleaning, fix house	Dog
Sat 4	Good for: construction, fix house <i>Bad for:</i> business, contracts	Pig
Sun 5	Good for: worship, prayer <i>Bad for:</i> moving, travel, begin mission	Rat
Mon 6	Good for: most activities <i>Bad for:</i> lawsuit, hunting	Ox
Tue 7	Good for: most activities <i>Bad for:</i> lawsuit, hunting	Tiger
Wed 8	Good for: worship, prayer <i>Bad for:</i> burial, ground digging	Rabbit
Thu 9	Good for: worship, prayer <i>Bad for:</i> burial, ground digging	Dragon
Fri 10	Good for: construction, fix house <i>Bad for:</i> grand opening, begin mission	Snake
Sat 11	Good for: school, planting <i>Bad for:</i> moving, fix house	Horse
Sun 12	🚫 DON'T DO IMPORTANT THINGS 🚫	Sheep
Mon 13	Good for: most activities <i>Bad for:</i> burial, ground digging	Monkey
Tue 14	Good for: grand opening, begin mission <i>Bad for:</i> funeral, lawsuit	Rooster
Wed 15	Good for: worship, prayer <i>Bad for:</i> contract, business	Dog

Thu 16	Good for: house cleaning, fix house <i>Bad for:</i> moving, travel	Pig
Fri 17	Good for: construction, fix house <i>Bad for:</i> grand opening, begin mission	Rat
Sat 18	Good for: most activities <i>Bad for:</i> burial, ground digging	Ox
Sun 19	Good for: moving, travel, begin mission <i>Bad for:</i> burial, ground digging	Tiger
Mon 20	Good for: worship, prayer <i>Bad for:</i> lawsuit, hunting	Rabbit
Tue 21	Good for: worship, prayer <i>Bad for:</i> grand opening, begin mission	Dragon
Wed 22	Good for: most activities <i>Bad for:</i> funeral, lawsuit	Snake
Thu 23	Good for: worship, prayer <i>Bad for:</i> grand opening, begin mission	Horse
Fri 24	🚫 DON'T DO IMPORTANT THINGS 🚫	Sheep
Sat 25	Good for: contract, business, buy property <i>Bad for:</i> burial, ground digging	Monkey
Sun 26	Good for: wedding, grand opening, business <i>Bad for:</i> construction, fix house	Rooster
Mon 27	Good for: most activities <i>Bad for:</i> lawsuit, hunting	Dog
Tue 28	Good for: worship, prayer <i>Bad for:</i> contract, business	Pig
Wed 29	Good for: construction, fix house <i>Bad for:</i> school, planting	Rat
Thu 30	Good for: moving, travel <i>Bad for:</i> contract, business	Ox
Fri 31	Good for: worship, prayer <i>Bad for:</i> business, buy property	Tiger

S	M	T	W	T	F	S
						1
2	3	4	5	6	7	8
9	10	11	12	13	14	15
16	17	18	19	20	21	22
23	24	25	26	27	28	29
30	31					

August 2015

unfavorable for:

Sat 1	Good for: most activities <i>Bad for:</i> funeral, lawsuit	Rabbit
Sun 2	Good for: construction, fix house <i>Bad for:</i> moving, travel	Dragon
Mon 3	Good for: most activities <i>Bad for:</i> hunting, surgery	Snake
Tue 4	Good for: construction, fix house <i>Bad for:</i> grand opening, begin mission	Horse
Wed 5	⊖ DON'T DO IMPORTANT THINGS ⊖	Sheep
Thu 6	Good for: most activities <i>Bad for:</i> burial, ground digging	Monkey
Fri 7	⊖ DON'T DO IMPORTANT THINGS ⊖	Rooster
Sat 8	Good for: worship, prayer <i>Bad for:</i> construction, fix house	Dog
Sun 9	Good for: most activities <i>Bad for:</i> funeral, lawsuit	Pig
Mon 10	Good for: wedding, grand opening, business <i>Bad for:</i> construction, ground digging	Rat
Tue 11	Good for: construction, fix house <i>Bad for:</i> contract, business	Ox
Wed 12	Good for: moving, travel <i>Bad for:</i> contract, business	Tiger
Thu 13	Good for: burial, ground digging <i>Bad for:</i> moving, travel	Rabbit
Fri 14	Good for: most activities <i>Bad for:</i> lawsuit, hunting	Dragon
Sat 15	Good for: worship, prayer <i>Bad for:</i> most activities	Snake

Sun 16	Good for: most activities <i>Bad for:</i> burial, ground digging	Horse
Mon 17	☞ DON'T DO IMPORTANT THINGS ☞	Sheep
Tue 18	☞ DON'T DO IMPORTANT THINGS ☞	Monkey
Wed 19	Good for: most activities <i>Bad for:</i> burial, ground digging	Rooster
Thu 20	Good for: grand opening, begin mission <i>Bad for:</i> lawsuit, hunting	Dog
Fri 21	☞ DON'T DO IMPORTANT THINGS ☞	Pig
Sat 22	Good for: begin mission, school <i>Bad for:</i> burial, ground digging	Rat
Sun 23	Good for: worship, prayer <i>Bad for:</i> wedding, grand opening, business	Ox
Mon 24	Good for: most activities <i>Bad for:</i> burial, ground digging	Tiger
Tue 25	Good for: construction, ground digging <i>Bad for:</i> moving, travel	Rabbit
Wed 26	Good for: house cleaning, fix house <i>Bad for:</i> grand opening, begin mission	Dragon
Thu 27	Good for: worship, prayer <i>Bad for:</i> grand opening, begin mission	Snake
Fri 28	Good for: most activities <i>Bad for:</i> burial, ground digging	Horse
Sat 29	☞ DON'T DO IMPORTANT THINGS ☞	Sheep
Sun 30	☞ DON'T DO IMPORTANT THINGS ☞	Monkey
Mon 31	Good for: worship, prayer <i>Bad for:</i> most activities	Rooster

S	M	T	W	T	F	S
		1	2	3	4	5
6	7	8	9	10	11	12
13	14	15	16	17	18	19
20	21	22	23	24	25	26
27	28	29	30			

September 2015

unfavorable for:

Tue 1	Good for: worship, prayer Bad for: contract, business	Dog
Wed 2	Good for: contract, grand opening Bad for: moving, travel	Pig
Thu 3	Good for: most activities Bad for: lawsuit, hunting	Rat
Fri 4	Good for: worship, prayer Bad for: grand opening, begin mission	Ox
Sat 5	Good for: moving, travel Bad for: construction, ground digging	Tiger
Sun 6	Good for: house cleaning, fix house Bad for: moving, begin mission	Rabbit
Mon 7	Good for: school, planting Bad for: burial, ground digging	Dragon
Tue 8	Good for: contract, business Bad for: construction, ground digging	Snake
Wed 9	Good for: worship, prayer Bad for: begin mission, school	Horse
Thu 10	🚫 DON'T DO IMPORTANT THINGS 🚫	Sheep
Fri 11	Good for: burial, ground digging Bad for: contract, business	Monkey
Sat 12	🚫 DON'T DO IMPORTANT THINGS 🚫	Rooster
Sun 13	Good for: contract, business Bad for: moving, travel	Dog
Mon 14	Good for: most activities Bad for: funeral, lawsuit	Pig
Tue 15	Good for: worship, prayer Bad for: contract, business	Rat

Wed 16	Good for: most activities <i>Bad for:</i> lawsuit, hunting	Ox
Thu 17	Good for: burial, ground digging <i>Bad for:</i> construction, fix house	Tiger
Fri 18	Good for: worship, prayer <i>Bad for:</i> contract, business	Rabbit
Sat 19	Good for: worship, prayer <i>Bad for:</i> contract, business, buy property	Dragon
Sun 20	Good for: most activities <i>Bad for:</i> burial, ground digging	Snake
Mon 21	Good for: worship, prayer <i>Bad for:</i> grand opening, begin mission	Horse
Tue 22	🚫 DON'T DO IMPORTANT THINGS 🚫	Sheep
Wed 23	Good for: worship, prayer <i>Bad for:</i> burial, funeral	Monkey
Thu 24	🚫 DON'T DO IMPORTANT THINGS 🚫	Rooster
Fri 25	Good for: worship, prayer <i>Bad for:</i> moving, travel	Dog
Sat 26	Good for: most activities <i>Bad for:</i> hunting, surgery	Pig
Sun 27	Good for: worship, prayer <i>Bad for:</i> burial, ground digging	Rat
Mon 28	Good for: most activities <i>Bad for:</i> burial, ground digging	Ox
Tue 29	Good for: house cleaning, fix house <i>Bad for:</i> contract, business	Tiger
Wed 30	Good for: worship, prayer <i>Bad for:</i> most activities	Rabbit

S	M	T	W	T	F	S
			1	2	3	
4	5	6	7	8	9	10
11	12	13	14	15	16	17
18	19	20	21	22	23	24
25	26	27	28	29	30	31

October 2015

unfavorable for:

Thu 1	Good for: most activities Bad for: lawsuit, hunting	Dragon
Fri 2	Good for: burial, ground digging Bad for: contract, grand opening	Snake
Sat 3	Good for: worship, prayer Bad for: most activities	Horse
Sun 4	🚫 DON'T DO IMPORTANT THINGS 🚫	Sheep
Mon 5	Good for: house cleaning, fix house Bad for: wedding, grand opening	Monkey
Tue 6	🚫 DON'T DO IMPORTANT THINGS 🚫	Rooster
Wed 7	Good for: school, planting Bad for: construction, fix house	Dog
Thu 8	Good for: wedding, contract, grand opening Bad for: burial, ground digging	Pig
Fri 9	Good for: most activities Bad for: lawsuit, hunting	Rat
Sat 10	Good for: house cleaning, fix house Bad for: travel, begin mission	Ox
Sun 11	Good for: most activities Bad for: burial, ground digging	Tiger
Mon 12	Good for: house cleaning, fix house Bad for: contract, business	Rabbit
Tue 13	Good for: moving, travel, begin mission Bad for: construction, fix house	Dragon
Wed 14	Good for: worship, prayer Bad for: contract, business	Snake
Thu 15	Good for: begin mission, school Bad for: burial, ground digging	Horse

Fri 16	☹ DON'T DO IMPORTANT THINGS ☹	Sheep
Sat 17	Good for: burial, ground digging Bad for: moving, travel	Monkey
Sun 18	Good for: most activities Bad for: funeral, lawsuit	Rooster
Mon 19	☹ DON'T DO IMPORTANT THINGS ☹	Dog
Tue 20	☹ DON'T DO IMPORTANT THINGS ☹	Pig
Wed 21	Good for: most activities Bad for: lawsuit, hunting	Rat
Thu 22	Good for: worship, prayer Bad for: burial, ground digging	Ox
Fri 23	Good for: most activities Bad for: burial, ground digging	Tiger
Sat 24	Good for: worship, prayer Bad for: funeral, lawsuit	Rabbit
Sun 25	Good for: worship, prayer Bad for: contract, business	Dragon
Mon 26	Good for: house cleaning, fix house Bad for: moving, travel, begin mission	Snake
Tue 27	Good for: most activities Bad for: moving, fix house	Horse
Wed 28	☹ DON'T DO IMPORTANT THINGS ☹	Sheep
Thu 29	Good for: house cleaning, fix house Bad for: moving, travel	Monkey
Fri 30	Good for: contract, business Bad for: construction, ground digging	Rooster
Sat 31	☹ DON'T DO IMPORTANT THINGS ☹	Dog

S	M	T	W	T	F	S
1	2	3	4	5	6	7
8	9	10	11	12	13	14
15	16	17	18	19	20	21
22	23	24	25	26	27	28
29	30					

November 2015

unfavorable for:

Sun 1	Good for: construction, ground digging <i>Bad for:</i> moving, travel	Pig
Mon 2	Good for: most activities <i>Bad for:</i> lawsuit, hunting	Rat
Tue 3	Good for: begin mission, school <i>Bad for:</i> burial, ground digging	Ox
Wed 4	Good for: grand opening, begin mission <i>Bad for:</i> construction, fix house	Tiger
Thu 5	Good for: house cleaning, fix house <i>Bad for:</i> grand opening, begin mission	Rabbit
Fri 6	Good for: most activities <i>Bad for:</i> lawsuit, hunting	Dragon
Sat 7	🚫 DON'T DO IMPORTANT THINGS 🚫	Snake
Sun 8	Good for: begin mission, school <i>Bad for:</i> burial, funeral	Horse
Mon 9	🚫 DON'T DO IMPORTANT THINGS 🚫	Sheep
Tue 10	Good for: most activities <i>Bad for:</i> construction, ground digging	Monkey
Wed 11	Good for: wedding, contract, grand opening <i>Bad for:</i> burial, ground digging	Rooster
Thu 12	Good for: construction, fix house <i>Bad for:</i> moving, travel	Dog
Fri 13	🚫 DON'T DO IMPORTANT THINGS 🚫	Pig
Sat 14	Good for: most activities <i>Bad for:</i> lawsuit, hunting	Rat
Sun 15	Good for: grand opening, begin mission <i>Bad for:</i> burial, ground digging	Ox

Mon 16	Good for: house cleaning, fix house <i>Bad for:</i> wedding, grand opening	Tiger
Tue 17	Good for: worship, prayer <i>Bad for:</i> contract, business	Rabbit
Wed 18	Good for: construction, fix house <i>Bad for:</i> moving, travel	Dragon
Thu 19	Good for: worship, prayer <i>Bad for:</i> burial, ground digging	Snake
Fri 20	Good for: most activities <i>Bad for:</i> lawsuit, hunting	Horse
Sat 21	☞ DON'T DO IMPORTANT THINGS ☞	Sheep
Sun 22	Good for: most activities <i>Bad for:</i> burial, ground digging	Monkey
Mon 23	Good for: wedding, contract, grand opening <i>Bad for:</i> funeral, lawsuit	Rooster
Tue 24	Good for: most activities <i>Bad for:</i> construction, ground digging	Dog
Wed 25	☞ DON'T DO IMPORTANT THINGS ☞	Pig
Thu 26	Good for: prayer, worship <i>Bad for:</i> moving, fix house	Rat
Fri 27	Good for: grand opening, begin mission <i>Bad for:</i> lawsuit, hunting	Ox
Sat 28	Good for: house cleaning, fix house <i>Bad for:</i> grand opening, begin mission	Tiger
Sun 29	Good for: most activities <i>Bad for:</i> burial, ground digging	Rabbit
Mon 30	Good for: worship, prayer <i>Bad for:</i> most activities	Dragon

S	M	T	W	T	F	S
		1	2	3	4	5
6	7	8	9	10	11	12
13	14	15	16	17	18	19
20	21	22	23	24	25	26
27	28	29	30	31		

December 2015

unfavorable for:

Tue 1	Good for: worship, prayer Bad for: wedding, grand opening	<i>Snake</i>
Wed 2	Good for: house cleaning, fix house Bad for: moving, travel	<i>Horse</i>
Thu 3	⊖ DON'T DO IMPORTANT THINGS ⊖	<i>Sheep</i>
Fri 4	Good for: grand opening, begin mission Bad for: moving, fix house	<i>Monkey</i>
Sat 5	Good for: most activities Bad for: hunting, surgery	<i>Rooster</i>
Sun 6	Good for: contract, business Bad for: moving, travel	<i>Dog</i>
Mon 7	⊖ DON'T DO IMPORTANT THINGS ⊖	<i>Pig</i>
Tue 8	⊖ DON'T DO IMPORTANT THINGS ⊖	<i>Rat</i>
Wed 9	Good for: house cleaning, fix house Bad for: grand opening, begin mission	<i>Ox</i>
Thu 10	Good for: begin mission, school Bad for: burial, ground digging	<i>Tiger</i>
Fri 11	Good for: house cleaning, fix house Bad for: contract, business	<i>Rabbit</i>
Sat 12	Good for: begin mission, school Bad for: burial, ground digging	<i>Dragon</i>
Sun 13	Good for: worship, prayer Bad for: wedding, grand opening	<i>Snake</i>
Mon 14	Good for: house cleaning, fix house Bad for: burial, ground digging	<i>Horse</i>
Tue 15	⊖ DON'T DO IMPORTANT THINGS ⊖	<i>Sheep</i>

Wed 16	Good for: contract, business <i>Bad for:</i> construction, ground digging	Monkey
Thu 17	Good for: construction, fix house <i>Bad for:</i> grand opening, begin mission	Rooster
Fri 18	Good for: most activities <i>Bad for:</i> lawsuit, hunting	Dog
Sat 19	⊖ DON'T DO IMPORTANT THINGS ⊖	Pig
Sun 20	⊖ DON'T DO IMPORTANT THINGS ⊖	Rat
Mon 21	⊖ DON'T DO IMPORTANT THINGS ⊖	Ox
Tue 22	Good for: most activities <i>Bad for:</i> funeral, lawsuit	Tiger
Wed 23	Good for: construction, fix house <i>Bad for:</i> wedding, grand opening	Rabbit
Thu 24	Good for: most activities <i>Bad for:</i> burial, ground digging	Dragon
Fri 25	Good for: worship, prayer <i>Bad for:</i> moving, travel	Snake
Sat 26	Good for: construction, fix house <i>Bad for:</i> most activities	Horse
Sun 27	⊖ DON'T DO IMPORTANT THINGS ⊖	Sheep
Mon 28	Good for: grand opening, begin mission <i>Bad for:</i> contract, business, buy property	Monkey
Tue 29	Good for: house cleaning, fix house <i>Bad for:</i> moving, travel	Rooster
Wed 30	Good for: most activities <i>Bad for:</i> hunting, surgery	12 Dog Pig
Thu 31	Good for: worship, prayer <i>Bad for:</i> grand opening, begin mission	

S	M	T	W	T	F	S
				1	2	
3	4	5	6	7	8	9
10	11	12	13	14	15	16
17	18	19	20	21	22	23
24	25	26	27	28	29	30
31						

January 2016

unfavorable for:

Fri 1	⊖ DON'T DO IMPORTANT THINGS ⊖	<i>Rat</i>
Sat 2	Good for: worship, prayer Bad for: <i>burial, ground digging</i>	<i>Ox</i>
Sun 3	Good for: most activities Bad for: <i>moving, fix house</i>	<i>Tiger</i>
Mon 4	Good for: worship, prayer Bad for: <i>grand opening, begin mission</i>	<i>Rabbit</i>
Tue 5	Good for: contract, business, buy property Bad for: <i>burial, ground digging</i>	<i>Dragon</i>
Wed 6	Good for: construction, ground digging Bad for: <i>wedding, contract, grand opening</i>	<i>Snake</i>
Thu 7	Good for: worship, prayer Bad for: <i>grand opening, begin mission</i>	<i>Horse</i>
Fri 8	⊖ DON'T DO IMPORTANT THINGS ⊖	<i>Sheep</i>
Sat 9	Good for: most activities Bad for: <i>hunting, surgery</i>	<i>Monkey</i>
Sun 10	Good for: burial, funeral Bad for: <i>wedding, contract, grand opening</i>	<i>Rooster</i>
Mon 11	Good for: house cleaning, fix house Bad for: <i>contract, business</i>	<i>Dog</i>
Tue 12	Good for: contract, business Bad for: <i>construction, ground digging</i>	<i>Pig</i>
Wed 13	Good for: worship, prayer Bad for: <i>wedding, grand opening</i>	<i>Rat</i>
Thu 14	⊖ DON'T DO IMPORTANT THINGS ⊖	<i>Ox</i>
Fri 15	Good for: most activities Bad for: <i>lawsuit, hunting</i>	<i>Tiger</i>

Sat 16	Good for: wedding, contract, grand opening <i>Bad for:</i> funeral, lawsuit	Rabbit
Sun 17	Good for: worship, prayer <i>Bad for:</i> contract, business	Dragon
Mon 18	Good for: worship, prayer <i>Bad for:</i> wedding, business	Snake
Tue 19	Good for: contract, business, buy property <i>Bad for:</i> construction, ground digging	Horse
Wed 20	🚫 DON'T DO IMPORTANT THINGS 🚫	Sheep
Thu 21	Good for: burial, funeral <i>Bad for:</i> grand opening, begin mission	Monkey
Fri 22	Good for: worship, prayer <i>Bad for:</i> burial, ground digging	Rooster
Sat 23	Good for: house cleaning, fix house <i>Bad for:</i> moving, travel	Dog
Sun 24	Good for: contract, business, buy property <i>Bad for:</i> burial, ground digging	Pig
Mon 25	Good for: school, planting <i>Bad for:</i> burial, ground digging	Rat
Tue 26	🚫 DON'T DO IMPORTANT THINGS 🚫	Ox
Wed 27	Good for: worship, prayer <i>Bad for:</i> contract, business	Tiger
Thu 28	Good for: wedding, grand opening, business <i>Bad for:</i> funeral, lawsuit	Rabbit
Fri 29	Good for: worship, prayer <i>Bad for:</i> most activities	Dragon
Sat 30	Good for: house cleaning, fix house <i>Bad for:</i> grand opening, begin mission	Snake
Sun 31	Good for: worship, prayer <i>Bad for:</i> construction, ground digging	Horse

When you lose,
don't lose the lesson

事
不
忘
後
事
不
忘
呼



Calligraphy by Larry Sang

TEN THOUSAND YEAR CALENDAR



TEN-THOUSAND YEAR CALENDAR

	1 ST MONTH Wu Yin	2 ND MONTH Ji Mao	3 RD MONTH Geng Chen	4 TH MONTH Xin Si	5 TH MONTH Ren Wu	6 TH MONTH Gui Wei	
1	2/19 Bing Yin	3/20 Yi Wei	4/19 Yi Chou	5/18 Jia Wu	6/16 Gui Hai	7/16 Gui Si	1
2	2/20 Ding Mao	3/21 Bing Shen	4/20 Bing Yin	5/19 Yi Wei	6/17 Jia Zi	7/17 Jia Wu	2
3	2/21 Wu Chen	3/22 Ding You	4/21 Ding Mao	5/20 Bing Shen	6/18 Yi Chou	7/18 Yi Wei	3
4	2/22 Ji Si	3/23 Wu Xu	4/22 Wu Chen	5/21 Ding You	6/19 Bing Yin	7/19 Bing Shen	4
5	2/23 Geng Wu	3/24 Ji Hai	4/23 Ji Si	5/22 Wu Xu	6/20 Ding Mao	7/20 Ding You	5
6	2/24 Xin Wei	3/25 Geng Zi	4/24 Geng Wu	5/23 Ji Hai	6/21 Wu Chen	7/21 Wu Xu	6
7	2/25 Ren Shen	3/26 Xin Chou	4/25 Xin Wei	5/24 Geng Zi	6/22 Ji Si	7/22 Ji Hai	7
8	2/26 Gui You	3/27 Ren Yin	4/26 Ren Shen	5/25 Xin Chou	6/23 Geng Wu	7/23 Geng Zi	8
9	2/27 Jia Xu	3/28 Gui Mao	4/27 Gui You	5/26 Ren Yin	6/24 Xin Wei	7/24 Xin Chou	9
10	2/28 Yi Hai	3/29 Jia Chen	4/28 Jia Xu	5/27 Gui Mao	6/25 Ren Shen	7/25 Ren Yin	10
11	3/1 Bing Zi	3/30 Yi Si	4/29 Yi Hai	5/28 Jia Chen	6/26 Gui You	7/26 Gui Mao	11
12	3/2 Ding Chou	3/31 Bing Wu	4/30 Bing Zi	5/29 Yi Si	6/27 Jia Xu	7/27 Jia Chen	12
13	3/3 Wu Yin	4/1 Ding Wei	5/1 Ding Chou	5/30 Bing Wu	6/28 Yi Hai	7/28 Yi Si	13
14	3/4 Ji Mao	4/2 Wu Shen	5/2 Wu Yin	5/31 Ding Wei	6/29 Bing Zi	7/29 Bing Wu	14
15	3/5 Geng Chen	4/3 Ji You	5/3 Ji Mao	6/1 Wu Shen	6/30 Ding Chou	7/30 Ding Wei	15
16	3/6 Xin Si	4/4 Geng Xu	5/4 Geng Chen	6/2 Ji You	7/1 Wu Yin	7/31 Wu Shen	16
17	3/7 Ren Wu	4/5 Xin Hai	5/5 Xin Si	6/3 Geng Xu	7/2 Ji Mao	8/1 Ji You	17
18	3/8 Gui Wei	4/6 Ren Zi	5/6 Ren Wu	6/4 Xin Hai	7/3 Geng Chen	8/2 Geng Xu	18
19	3/9 Jia Shen	4/7 Gui Chou	5/7 Gui Wei	6/5 Ren Zi	7/4 Xin Si	8/3 Xin Hai	19
20	3/10 Yi You	4/8 Jia Yin	5/8 Jia Shen	6/6 Gui Chou	7/5 Ren Wu	8/4 Ren Zi	20
21	3/11 Bing Xu	4/9 Yi Mao	5/9 Yi You	6/7 Jia Yin	7/6 Gui Wei	8/5 Gui Chou	21
22	3/12 Ding Hai	4/10 Bing Chen	5/10 Bing Xu	6/8 Yi Mao	7/7 Jia Shen	8/6 Jia Yin	22
23	3/13 Wu Zi	4/11 Ding Si	5/11 Ding Hai	6/9 Bing Chen	7/8 Yi You	8/7 Yi Mao	23
24	3/14 Ji Chou	4/12 Wu Wu	5/12 Wu Zi	6/10 Ding Si	7/9 Bing Xu	8/8 Bing Chen	24
25	3/15 Geng Yin	4/13 Ji Wei	5/13 Ji Chou	6/11 Wu Wu	7/10 Ding Hai	8/9 Ding Si	25
26	3/16 Xin Mao	4/14 Geng Shen	5/14 Geng Yin	6/12 Ji Wei	7/11 Wu Zi	8/10 Wu Wu	26
27	3/17 Ren Chen	4/15 Xin You	5/15 Xin Mao	6/13 Geng Shen	7/12 Ji Chou	8/11 Ji Wei	27
28	3/18 Gui Si	4/16 Ren Xu	5/16 Ren Chen	6/14 Xin You	7/13 Geng Yin	8/12 Geng Shen	28
29	3/19 Jia Wu	4/17 Gui Hai	5/17 Gui Si	6/15 Ren Xu	7/14 Xin Mao	8/13 Xin You	29
30		4/18 Jia Zi			7/15 Ren Chen		30
	5 Yellow	4 Green	3 Jade	2 Black	1 White	9 Purple	
Jie	Li Chun 2/4 12:09p	Jing Zhi 3/6 5:56a	Qing Ming 4/5 10:58a	Li Xia 5/6 4:00a	Mang Zhong 6/6 8:20a	Xiao Shu 7/7 6:30p	Jie
Qi	Yu Shui 2/4 7:54a	Chun Fen 3/21 6:47a	Gu Yu 4/20 5:52p	Xiao Man 5/21 5:05p	Xia Zhi 6/22 2:09a	Da Shu 7/23 12:16p	Qi

Year: Jia Wu • 4 Green

 **2015**

	7 TH MONTH Jia Shen	8 TH MONTH Yi You	9 TH MONTH Bing Xu	10 TH MONTH Ding Hai	11 TH MONTH Wu Zi	12 TH MONTH Ji Chou	
					2015 - 2016		
1	8/14 Ren Xu	9/13 Ren Chen	10/13 Ren Xu	11/12 Ren Chen	12/11 Xin You	1/10 Xin Mao	1
2	8/15 Gui Hai	9/14 Gui Si	10/14 Gui Hai	11/13 Gui Si	12/12 Ren Xu	1/11 Ren Chen	2
3	8/16 Jia Zi	9/15 Jia Wu	10/15 Jia Zi	11/14 Jia Wu	12/13 Gui Hai	1/12 Gui Si	3
4	8/17 Yi Chou	9/16 Yi Wei	10/16 Yi Chou	11/15 Yi Wei	12/14 Jia Zi	1/13 Jia Wu	4
5	8/18 Bing Yin	9/17 Bing Shen	10/17 Bing Yin	11/16 Bing Shen	12/15 Yi Chou	1/14 Yi Wei	5
6	8/19 Ding Mao	9/18 Ding You	10/18 Ding Mao	11/17 Ding You	12/16 Bing Yin	1/15 Bing Shen	6
7	8/20 Wu Chen	9/19 Wu Xu	10/19 Wu Chen	11/18 Wu Xu	12/17 Ding Mao	1/16 Ding You	7
8	8/21 Ji Si	9/20 Ji Hai	10/20 Ji Si	11/19 Ji Hai	12/18 Wu Chen	1/17 Wu Xu	8
9	8/22 Geng Wu	9/21 Geng Zi	10/21 Geng Wu	11/20 Geng Zi	12/19 Ji Si	1/18 Ji Hai	9
10	8/23 Xin Wei	9/22 Xin Chou	10/22 Xin Wei	11/21 Xin Chou	12/20 Geng Wu	1/19 Geng Zi	10
11	8/24 Ren Shen	9/23 Ren Yin	10/23 Ren Shen	11/22 Ren Yin	12/21 Xin Wei	1/20 Xin Chou	11
12	8/25 Gui You	9/24 Gui Mao	10/24 Gui You	11/23 Gui Mao	12/22 Ren Shen	1/21 Ren Yin	12
13	8/26 Jia Xu	9/25 Jia Chen	10/25 Jia Xu	11/24 Jia Chen	12/23 Gui You	1/22 Gui Mao	13
14	8/27 Yi Hai	9/26 Yi Si	10/26 Yi Hai	11/25 Yi Si	12/24 Jia Xu	1/23 Jia Chen	14
15	8/28 Bing Zi	9/27 Bing Wu	10/27 Bing Zi	11/26 Bing Wu	12/25 Yi Hai	1/24 Yi Si	15
16	8/29 Ding Chou	9/28 Ding Wei	10/28 Ding Chou	11/27 Ding Wei	12/26 Bing Zi	1/25 Bing Wu	16
17	8/30 Wu Yin	9/29 Wu Shen	10/29 Wu Yin	11/28 Wu Shen	12/27 Ding Chou	1/26 Ding Wei	17
18	8/31 Ji Mao	9/30 Ji You	10/30 Ji Mao	11/29 Ji You	12/28 Wu Yin	1/27 Wu Shen	18
19	9/1 Geng Chen	10/1 Geng Xu	10/31 Geng Chen	11/30 Geng Xu	12/29 Ji Mao	1/28 Ji You	19
20	9/2 Xin Si	10/2 Xin Hai	11/1 Xin Si	12/1 Xin Hai	12/30 Geng Chen	1/29 Geng Xu	20
21	9/3 Ren Wu	10/3 Ren Zi	11/2 Ren Wu	12/2 Ren Zi	12/31 Xin Si	1/30 Xin Hai	21
22	9/4 Gui Wei	10/4 Gui Chou	11/3 Gui Wei	12/3 Gui Chou	1/1 Ren Wu	1/31 Ren Zi	22
23	9/5 Jia Shen	10/5 Jia Yin	11/4 Jia Shen	12/4 Jia Yin	1/2 Gui Wei	2/1 Gui Chou	23
24	9/6 Yi You	10/6 Yi Mao	11/5 Yi You	12/5 Yi Mao	1/3 Jia Shen	2/2 Jia Yin	24
25	9/7 Bing Xu	10/7 Bing Chen	11/6 Bing Xu	12/6 Bing Chen	1/4 Yi You	2/3 Yi Mao	25
26	9/8 Ding Hai	10/8 Ding Si	11/7 Ding Hai	12/7 Ding Si	1/5 Bing Xu	2/4 Bing Chen	26
27	9/9 Wu Zi	10/9 Wu Wu	11/8 Wu Zi	12/8 Wu Wu	1/6 Ding Hai	2/5 Ding Si	27
28	9/10 Ji Chou	10/10 Ji Wei	11/9 Ji Chou	12/9 Ji Wei	1/7 Wu Zi	2/6 Wu Wu	28
29	9/11 Geng Yin	10/11 Geng Shen	11/10 Geng Yin	12/10 Geng Shen	1/8 Ji Chou	2/7 Ji Wei	29
30	9/12 Xin Mao	10/12 Xin You	11/11 Xin Mao		1/9 Geng Yin		30
	2 Black	1 White	9 Purple	8 White	7 Red	6 White	
Jie	Li Qiu 8/8 4:51a	Bai Lu 9/8 8:10a	Han Lu 10/9 12:09a	Li Dong 11/8 3:25a	Da Xue 12/7 8:01p	Xiao Han 1/6 6:47a	Jie
Qi	Chu Shu 8/23 7:51p	Qiu Fen 9/23 5:45p	Shuang Jiang 10/24 3:20a	Xiao Xue 11/23 12:48a	Dong Zhi 12/22 1:45p	Da Han 1/20 11:50p	Qi



The Principles of Feng Shui - Book One

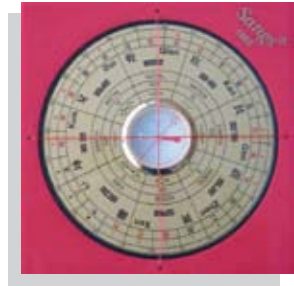
After years of intensive research, experimentation, exploration and teaching of Feng Shui, Master Larry Sang put forth his accumulated knowledge and insights into this book. This book will systematically introduce Feng Shui to its readers. This book is recommended for our Beginning, Intermediate and Advanced Feng Shui classes.

Available in paperback and ebook. \$18.75 US

Sang's Luopan

The Luopan is a Chinese compass used in Feng Shui readings. It offers more information for a Feng Shui reading besides the cardinal and intercardinal directions. Whereas a Western compass may be used in Feng Shui, a Luopan saves several steps in calculation. The Luopan is 4 inches (10cm) square. The Luopan is recommended for user in our Feng Shui classes and practice.

\$60.00 US



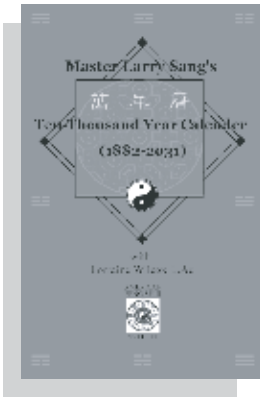
Yi Jing for Love and Marriage

In the journey of life, we often experience times of doubt, confusion and feeling lost. What should we do when facing this type of situation? The Changing Hexagram Divination method can help by predicting what may happen. It can provide guidelines for coping with difficult situations or insight into beneficial ones. This book provides a simple method for the reader to predict the answers to their questions and to help others. Besides resolving confusion and doubt, it also provides a fun hobby for those interested in the ancient art of divination. Use this book as your consultant on Love and Marriage when the need arises!

Available in paperback and ebook. \$14.75 US



Ten-Thousand Year Calendar (1882 - 2031)



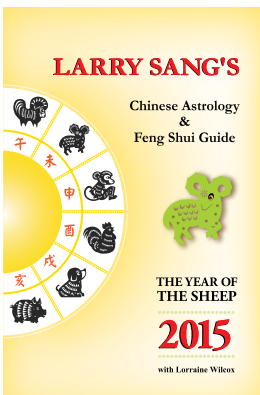
Normally printed in Chinese, but now in English, this handy reference guide is what the Chinese call the Ten-Thousand Year Calendar. This calendar contains information for 150 years, from 1882 to 2031. It gives the annual, monthly, and daily stem and branch, the annual and monthly flying star, as well as the lunar day of the month. It also gives information about the lunar and solar months, the solstices, equinoxes, and the beginning of the four seasons in the Chinese calendar. The Ten-Thousand Year Calendar is used for Feng Shui, Chinese Astrology, Day Selection, and various predictive techniques.

Available in ebook only. \$26.00 US

Feng Shui Facts and Myths

This book is a collection of stories about Feng Shui and Astrology. Master Sang attempts to explain aspects of Feng Shui and Chinese Astrology, as the terms are understood or misunderstood in the West. This book will provide you with deeper information on the Chinese culture traditions of Feng Shui and Astrology.

Available in paperback and ebook. \$16.00 US



Larry Sang's 2015 Chinese Astrology & Feng Shui Guide The Year of The Sheep

Each section explains how to determine the key piece: determining your animal sign; how to read the Feng Shui of your home; and how to read the Day Selection calendar - a valuable day by day indication of favorable and unfavorable activity.

Available in paperback and ebook. \$15.75 US

COURSE CATALOG

The following is a current list of the courses available from *The American Feng Shui Institute*. Please consult our online catalog for course fees, descriptions and new additions.

FENG SHUI

CLASS	CLASS NAME	PREREQUISITE
FS095	Introduction to Feng Shui	
FS101/OL	Beginning Feng Shui & Online	-
FS102/OL	Intermediate Feng Shui & Online	-
FS201/OL	Advanced Feng Shui & Online	FS101+FS102/OL
FS205/OL	Advanced Sitting and Facing & Online	FS101+FS102/OL
FS106/OL	Additional Concepts on Sitting & Facing	FS102/OL
FS225	Feng Shui Folk Beliefs	FS201
FS227/OL	Professional Skills for Feng Shui Consultants	FS201
FS231	Feng Shui Yourself & Your Business	FS201
FS235	Symptoms of a House	FS201
FS250	Explanation of Advanced Feng Shui Theories	FS201
FS275	9 Palace Grid and Pie Chart Graph Usage & Online	FS201
FS280	Advanced East West Theory	FS201
FS301	Advanced Feng Shui Case Study 1 & 2	FS201
FS303	Advanced Feng Shui Case Study 3 & 4 + Online	FS201
FS305/OL	Advanced Feng Shui Case Study 5 & Online	FS201
FS306/OL	Advanced Feng Shui Case Study 6 & Online	FS201
FS307/OL	Advanced Feng Shui Case Study 7 & Online	FS201
FS308/OL	Advanced Feng Shui Case Study 8 & Online	FS201
FS309	Advanced Feng Shui Case Study 9 & 10	FS201
FS311	Advanced Feng Shui Case Study 11	FS201
FS312/OL	Advanced Feng Shui Case Study 12	FS201
FS313/OL	Advanced Feng Shui Case Study 13 & Online	FS201 & AS101
FS314	Advanced Feng Shui Case Study 14	FS201
FS315	Advanced Feng Shui Case Study 15	FS201
FS316/FS317	Advanced Feng Shui Case Study 16 & 17	FS201
FS318/FS319	Advanced Feng Shui Case Study 18 & 19	FS201
FS320/FS321	Advanced Feng Shui Case Study 20 & 21	FS201
FS322/FS323	Advanced Feng Shui Case Study 22 & 23	FS201 & AS101
FS324/FS325	Advanced Feng Shui Case Study 24 & 25	FS201
FS326/FS327	Advanced Feng Shui Case Study 26 & 27	FS201

FENG SHUI - *continued from previous page*

FS340/OL	Secrets of the Five Ghosts	FS201
FS341	The Secrets of the "San Ban Gua"	FS201
FS260/OL	Lawsuit Support & Online	FS201 & AS101
FS270/OL	The Taisui, Year Breaker, Three Sha & Online	FS201 & AS101
FS350/OL	Feng Shui Day Selection 1 & Online	FS201 & AS101
FS351/OL	Feng Shui Day Selection 2 & Online	FS201 & FS350/OL
FS360/OL	Marriage and Life Partner Selection Online	FS201 & AS101
FS375/OL	Introduction to Yin House Feng Shui	FS201

YI JING

YJ101	Beginning Yi Jing Divination	AS101
YJ102	Yi Jing Coin Divination	AS101
YJ103	Plum Flower Yi Jing Calculation	AS101

CHINESE ASTROLOGY

AS101	Stems and Branches & Online	-
AS102	Four Pillars 1 & 2 (Zi Ping Ba Zi)	AS101 or AS101/OL
AS103	Four Pillars 3 & 4 (Zi Ping Ba Zi)	AS102
AS105	Four Pillars 5 & 6 (Zi Ping Ba Zi)	AS103
AS201A/OL	Beginning Zi Wei Dou Shu, Part 1	AS101
AS201B/OL	Beginning Zi Wei Dou Shu, Part 2	AS201A/OL
AS211/OL	Intermediate Zi Wei Dou Shu	AS201B/OL
AS301A/OL	Advanced Zi Wei Dou Shu, Part 1	AS211/OL
AS301B/OL	Advanced Zi Wei Dou Shu, Part 2	AS201A/OL
AS311/OL	Zi Wei Dou Shu Case Study 1 & Online	AS301B/OL
AS313/OL	Zi Wei Dou Shu Case Study 3 & Online	AS301B/OL
AS314	Zi Wei Dou Shu Case Study 2 & 4	AS301B/OL

CHINESE ARTS

CA101/OL	Palm & Face Reading 1 & 2	-
CA102	Palm & Face Reading 3 & 4	CA101 or CA101/OL
CA103	Palm & Face Reading for Health	-
CA121	Introduction to Chinese Medicine	-
CA110	Professional Face Reading	-

CHINESE PHILOSOPHY

CP101	Introduction to Daode Jing	-
CP102	Feng Shui Yourself	-

CLASSES AT THE AMERICAN FENG SHUI INSTITUTE

Due to the limited seating capacity, reservations are necessary and seats are on a first come first serve basis. To reserve your seat, a \$50.00 US deposit is required and is non-refundable if cancellation by student takes place less than three days before class. Please mail-in check or call us to reserve your seat with a credit card*. Balance is due on the first day of class.

**Please DO NOT e-mail credit card information as this is not a secure method*

ONLINE CLASSES WITH THE AMERICAN FENG SHUI INSTITUTE FEATURE:

- Easy navigation
- Self tests at the end of each module
- A discussion board with trained Institute's Instructors
- Audio clips for pronunciation
- An online discussion board
- An instant feedback final exam

The online classes are self-paced study modules. They are segmented into four, one-week lessons that lead you at your own pace, over the four-week course. You have 60 days to complete the course work.

For more information, please see our website:

www.amfengshui.com



7220 N. Rosemead Blvd.
Suite. 204
San Gabriel, CA 91775
Phone: (626) 571-2757

E-mail: fsinfo@amfengshui.com

AS A STUDENT OF THE AMERICAN FENG SHUI INSTITUTE:

You will receive a certificate of completion from the American Feng Shui Institute, for the Beginning/Intermediate and Advanced Feng Shui Classes. Please do not confuse this certification as licensing, as there are no requirements for practitioner at this time.

As a student of the Institute, we are available to assist you with your studies. We have an online Bulletin Board for questions and answers, featuring a topic search. You will obtain access to the Bulletin Board upon completion of the Advance Feng Shui class. Due to the complexity of the courses, graduates may repeat in the classroom that you have already taken, pending available seats. Please see our online course catalog for the most current course offerings.

CANCELLATION AND REFUND POLICY:

All institutional charges shall be returned to the registrant less a \$50.00 US cancellation fee, if cancellation notice is received prior to or on the first day of instruction. Any notification of withdrawal or cancellation and any request for a refund are required to be made in writing.

Refunds shall be made within thirty (30) days of receipt of the withdrawal or cancellation notice and refund request.

The institute does not participate in the Student Tuition Recovery Fund (STRF). We are registered with the State of California. Registration means we have met certain minimum standards imposed by the state for registered schools on the basis of our written application to the state. Registration does not mean we have met all of the more extensive standards required by the state for schools that are approved to operate or license or that the state has verified the information we submitted with our registration form.